

Temporary Cash Assistance: Applications Received, Approved, Not Approved and Cases Closed

Applications Received	2011 July	2011 August	2011 September	2011 October	2011 November	2011 December	2012 January	2012 February	2012 March	2012 April	2012 May	2012 June	FY '12 Average
Allegany	55	70	75	58	62	60	67	58	68	77	91	85	69
Anne Arundel	376	454	443	430	430	357	428	320	409	439	430	384	408
Baltimore Co.	793	942	851	751	779	735	882	598	836	828	910	778	807
Calvert	67	70	57	56	66	53	47	68	45	58	57	54	58
Caroline	43	67	47	59	63	50	53	36	38	43	57	50	51
Carroll	64	89	64	63	66	78	68	52	69	71	72	66	69
Cecil	134	156	152	155	149	105	149	121	132	113	145	121	136
Charles	103	129	98	125	79	92	112	91	119	101	96	87	103
Dorchester	43	48	67	57	65	40	52	34	53	50	52	42	50
Frederick	125	130	105	110	98	132	164	138	121	151	150	137	130
Garrett	20	18	20	10	10	9	16	10	14	13	16	15	14
Harford	165	179	182	156	163	141	192	129	168	177	155	138	162
Howard	131	149	160	146	145	135	156	114	157	140	135	124	141
Kent	25	19	20	26	24	24	25	20	14	23	28	24	23
Montgomery	517	594	642	601	523	491	555	442	491	473	512	444	524
Prince George's	671	818	644	525	530	456	572	532	650	552	659	580	599
Queen Anne's	21	40	36	28	25	18	21	24	26	19	24	21	25
St. Mary's	105	101	100	95	92	87	110	79	83	87	103	98	95
Somerset	47	57	43	34	36	29	31	28	37	41	45	38	39
Talbot	13	19	17	15	16	16	27	10	15	10	18	16	16
Washington	242	273	273	257	236	186	237	168	234	248	223	199	231
Wicomico	166	174	174	159	168	157	183	146	195	181	167	150	168
Worcester	18	22	29	37	25	26	32	31	27	36	27	23	28
Baltimore City	2,413	2,671	2,572	2,454	2,407	2,050	2,227	1,975	2,455	2,526	2,537	2,202	2,374
State Totals	6,357	7,289	6,871	6,407	6,257	5,527	6,406	5,224	6,456	6,457	6,709	5,876	6,320

Temporary Cash Assistance: Applications Received, Approved, Not Approved and Cases Closed

Applications Approved	2011 July	2011 August	2011 September	2011 October	2011 November	2011 December	2012 January	2012 February	2012 March	2012 April	2012 May	2012 June	FY '12 Average
Allegany	24	40	35	45	32	31	36	32	37	42	47	46	37
Anne Arundel	169	199	164	200	158	183	156	133	122	160	177	169	166
Baltimore Co.	294	319	259	296	302	289	286	210	293	293	318	307	289
Calvert	14	19	13	19	13	19	7	13	21	9	12	11	14
Caroline	18	23	27	21	16	40	15	18	15	13	26	25	21
Carroll	23	28	17	23	20	23	14	16	20	24	22	22	21
Cecil	54	65	54	81	67	64	46	55	68	56	64	62	61
Charles	30	38	31	41	57	28	36	49	42	32	34	32	38
Dorchester	17	20	16	31	20	32	13	21	10	17	27	25	21
Frederick	48	59	62	34	40	57	41	49	56	40	46	46	48
Garrett	11	13	11	8	7	5	4	5	5	4	11	11	8
Harford	73	73	48	53	60	53	55	64	36	57	62	57	58
Howard	61	46	70	46	64	62	50	65	66	46	57	56	57
Kent	7	9	8	5	11	11	10	7	5	6	14	14	9
Montgomery	110	121	124	151	148	144	117	125	125	106	141	138	129
Prince George's	221	252	324	232	214	234	242	267	246	250	266	258	251
Queen Anne's	4	16	19	20	11	8	11	9	16	6	8	7	11
St. Mary's	61	37	43	50	37	49	34	34	42	35	49	46	43
Somerset	15	23	19	17	17	16	11	11	11	14	24	22	17
Talbot	11	4	7	7	8	9	8	8	7	4	6	6	7
Washington	41	76	53	77	78	63	50	67	49	73	71	70	64
Wicomico	67	102	81	73	69	83	68	73	84	85	82	80	79
Worcester	4	6	10	4	23	8	9	6	9	7	5	5	8
Baltimore City	1,379	1,441	1,376	1,283	1,434	1,338	1,132	943	1,289	1,411	1,356	1,308	1,308
State Totals	2,756	3,029	2,871	2,817	2,906	2,849	2,451	2,280	2,674	2,790	2,925	2,823	2,764

Temporary Cash Assistance: Applications Received, Approved, Not Approved and Cases Closed

Applications Not Approved	2011	2011	2011	2011	2011	2011	2012	2012	2012	2012	2012	2012	FY '12 Average
	July	August	September	October	November	December	January	February	March	April	May	June	
Allegany	31	38	36	30	40	43	37	32	37	34	55	49	39
Anne Arundel	317	373	307	353	342	299	252	290	269	305	300	263	306
Baltimore Co.	745	770	633	743	715	693	575	597	564	630	705	579	662
Calvert	37	52	31	29	36	30	30	24	32	28	36	33	33
Caroline	36	35	34	37	38	33	41	29	27	27	34	28	33
Carroll	51	52	64	34	58	48	60	53	44	57	51	49	52
Cecil	100	117	74	101	87	87	81	88	66	80	69	61	84
Charles	83	85	87	81	111	69	61	73	68	65	100	87	81
Dorchester	27	23	38	41	39	34	30	23	35	36	43	36	34
Frederick	75	103	81	81	90	133	120	142	107	99	119	108	105
Garrett	10	16	7	7	3	4	12	11	7	11	9	8	9
Harford	119	142	116	121	114	125	118	138	99	121	140	118	123
Howard	86	103	117	115	109	111	90	106	90	89	117	104	103
Kent	8	20	16	10	20	16	12	21	13	14	19	16	15
Montgomery	458	526	527	528	511	476	406	487	410	408	417	360	460
Prince George's	469	517	553	380	353	366	351	411	354	404	371	320	404
Queen Anne's	13	23	23	15	18	16	15	11	16	10	16	13	16
St. Mary's	73	71	64	57	74	57	63	71	48	50	73	64	64
Somerset	29	44	36	22	23	23	20	17	14	29	42	37	28
Talbot	13	17	10	9	9	17	15	11	5	8	8	7	11
Washington	184	219	208	217	232	181	140	192	158	175	198	182	191
Wicomico	108	132	103	125	124	96	114	139	114	129	134	113	119
Worcester	15	19	22	34	27	22	37	29	27	25	21	13	24
Baltimore City	1,291	1,349	1,248	1,254	1,300	1,208	1,051	944	1,216	1,155	1,301	1,025	1,195
State Totals	4,378	4,846	4,435	4,424	4,473	4,187	3,731	3,939	3,820	3,989	4,378	3,673	4,189

Temporary Cash Assistance: Applications Received, Approved, Not Approved and Cases Closed

Cases Closed	2011 July	2011 August	2011 September	2011 October	2011 November	2011 December	2012 January	2012 February	2012 March	2012 April	2012 May	2012 June	FY '12 Average
Allegany	32	33	37	37	33	36	38	47	42	27	35	35	36
Anne Arundel	210	239	230	201	227	211	197	229	230	273	229	224	225
Baltimore Co.	327	389	466	341	463	336	400	368	493	398	455	450	407
Calvert	17	16	15	31	20	24	13	14	15	14	15	15	17
Caroline	29	21	40	25	25	28	21	33	30	29	23	22	27
Carroll	21	33	28	30	29	31	30	44	43	18	35	35	31
Cecil	76	76	74	73	85	59	69	74	94	89	73	71	76
Charles	25	40	20	25	25	32	47	49	54	44	51	50	39
Dorchester	29	39	36	24	34	18	26	41	32	34	30	30	31
Frederick	76	75	73	51	65	70	40	72	47	50	79	78	65
Garrett	7	7	7	12	10	14	10	14	4	6	10	10	9
Harford	75	68	84	61	89	66	88	67	84	79	60	60	73
Howard	94	73	118	62	59	94	61	79	133	64	51	51	78
Kent	7	10	17	15	12	7	4	11	7	13	15	15	11
Montgomery	133	150	183	143	145	156	147	149	157	165	164	164	155
Prince George's	238	371	367	242	358	274	342	538	502	365	410	401	367
Queen Anne's	14	22	15	19	24	20	31	32	22	22	21	21	22
St. Mary's	59	52	79	42	65	42	91	66	48	110	88	88	69
Somerset	19	11	16	11	16	15	14	18	21	9	16	15	15
Talbot	8	9	20	3	4	7	9	13	12	12	13	13	10
Washington	55	61	99	59	67	72	76	86	83	84	72	71	74
Wicomico	119	101	95	91	93	87	117	97	121	120	65	65	98
Worcester	13	15	11	11	5	6	12	18	13	11	16	16	12
Baltimore City	1,805	1,930	2,048	1,717	2,013	1,736	1,683	1,661	1,917	2,231	1,840	1,821	1,867
State Totals	3,488	3,841	4,178	3,326	3,966	3,441	3,566	3,820	4,204	4,267	3,866	3,821	3,815

Temporary Cash Assistance: Paid Cases, Paid Recipients (Adults & Children), Net Expenditures

Paid Cases	2011 July	2011 August	2011 September	2011 October	2011 November	2011 December	2012 January	2012 February	2012 March	2012 April	2012 May	2012 June	FY '12 Average
Allegany	307	325	325	350	331	346	338	338	325	350	365	350	338
Anne Arundel	1,569	1,549	1,524	1,574	1,573	1,591	1,578	1,538	1,500	1,474	1,525	1,398	1,533
Baltimore Co.	3,391	3,393	3,284	3,435	3,345	3,393	3,321	3,268	3,207	3,210	3,239	3,025	3,293
Calvert	149	167	157	150	142	147	132	137	153	144	147	137	147
Caroline	262	264	255	260	238	276	253	244	234	227	228	218	247
Carroll	258	268	261	266	268	263	256	247	236	253	253	238	256
Cecil	592	590	578	635	617	639	621	620	622	627	624	589	613
Charles	344	357	371	393	435	424	411	426	410	380	390	358	392
Dorchester	286	278	272	300	292	325	299	307	281	282	300	278	292
Frederick	517	522	526	497	487	498	498	485	519	498	480	456	499
Garrett	95	94	100	101	101	95	88	86	85	83	87	84	92
Harford	669	683	658	671	665	666	622	647	597	605	616	569	639
Howard	628	604	605	597	603	590	572	594	564	545	560	525	582
Kent	72	75	69	64	69	79	88	84	86	79	91	82	78
Montgomery	1,264	1,252	1,230	1,279	1,286	1,294	1,266	1,265	1,251	1,185	1,196	1,114	1,240
Prince George's	3,294	3,199	3,314	3,283	3,135	3,226	3,136	2,994	2,855	2,876	2,834	2,665	3,068
Queen Anne's	116	120	135	143	135	130	124	108	118	108	101	97	120
St. Mary's	664	647	638	661	633	652	601	579	590	526	509	480	598
Somerset	189	198	203	206	214	216	208	201	198	208	211	202	205
Talbot	89	83	72	82	84	88	90	95	92	86	84	81	86
Washington	588	611	599	650	673	677	656	664	645	644	674	618	642
Wicomico	744	778	790	797	761	795	732	725	711	694	727	683	745
Worcester	107	103	100	94	124	121	118	114	103	103	94	92	106
Baltimore City	12,911	12,800	12,676	12,846	12,785	12,915	12,559	12,202	12,267	12,048	12,056	11,369	12,453
State Totals	29,105	28,960	28,742	29,334	28,996	29,446	28,567	27,968	27,649	27,235	27,391	25,708	28,258

Temporary Cash Assistance: Paid Cases, Paid Recipients (Adults & Children), Net Expenditures

Total Paid Recipients	2011 July	2011 August	2011 September	2011 October	2011 November	2011 December	2012 January	2012 February	2012 March	2012 April	2012 May	2012 June	FY '12 Average
Allegany	719	791	792	874	836	862	801	825	775	839	891	922	827
Anne Arundel	3,824	3,835	3,745	3,920	3,894	3,991	3,918	3,777	3,692	3,570	3,693	3,678	3,795
Baltimore Co.	8,278	8,283	8,028	8,425	8,160	8,360	8,129	7,999	7,799	7,897	7,977	8,241	8,131
Calvert	360	391	361	350	321	354	304	308	356	329	333	294	338
Caroline	604	588	577	594	545	636	581	556	519	485	500	510	558
Carroll	587	624	599	625	620	605	574	563	531	571	567	502	581
Cecil	1,530	1,526	1,490	1,592	1,543	1,605	1,509	1,540	1,542	1,572	1,562	1,578	1,549
Charles	810	867	852	929	1,055	1,063	1,003	1,022	967	928	937	906	945
Dorchester	745	708	706	774	741	829	758	806	717	699	757	697	745
Frederick	1,343	1,341	1,364	1,261	1,258	1,291	1,252	1,239	1,324	1,288	1,236	1,298	1,291
Garrett	236	244	256	259	259	246	227	224	223	227	222	243	239
Harford	1,538	1,623	1,527	1,573	1,544	1,563	1,447	1,517	1,382	1,436	1,470	1,450	1,506
Howard	1,701	1,640	1,642	1,615	1,616	1,574	1,538	1,571	1,486	1,399	1,479	1,333	1,550
Kent	188	207	180	171	181	208	223	224	225	217	246	237	209
Montgomery	3,254	3,232	3,141	3,293	3,258	3,296	3,231	3,163	3,188	2,984	2,998	2,939	3,165
Prince George's	8,288	8,032	8,391	8,332	7,876	8,096	7,923	7,508	7,095	7,228	7,062	7,136	7,747
Queen Anne's	287	302	344	380	373	349	354	285	316	290	264	264	317
St. Mary's	1,864	1,799	1,787	1,854	1,783	1,846	1,704	1,628	1,650	1,468	1,406	1,347	1,678
Somerset	460	520	522	534	550	547	532	511	503	531	555	568	528
Talbot	197	175	161	170	183	190	191	198	184	179	175	196	183
Washington	1,482	1,549	1,521	1,673	1,738	1,721	1,635	1,683	1,615	1,599	1,755	1,799	1,648
Wicomico	1,950	2,053	2,084	2,108	2,014	2,133	1,960	1,964	1,908	1,881	1,954	1,917	1,994
Worcester	231	224	220	206	281	272	258	244	220	226	191	203	231
Baltimore City	33,601	33,456	32,904	33,468	33,213	33,803	32,859	31,761	31,788	31,253	31,351	32,408	32,655
State Totals*	74,078	74,012	73,194	74,980	73,843	75,442	72,911	71,117	70,036	69,097	69,581	70,666	72,413

*DHR reports local statistics based on preliminary data. State totals for recipients/expenditures are later revised in bold when final data are available.

Temporary Cash Assistance: Paid Cases, Paid Recipients (Adults & Children), Net Expenditures

Adult Paid Recipients	2011 July	2011 August	2011 September	2011 October	2011 November	2011 December	2012 January	2012 February	2012 March	2012 April	2012 May	2012 June	FY '12 Average
Allegany	211	229	243	265	249	268	253	257	237	261	283	294	254
Anne Arundel	1,078	1,065	1,039	1,100	1,087	1,109	1,080	1,042	993	956	1,014	1,012	1,048
Baltimore Co.	2,456	2,468	2,352	2,483	2,391	2,457	2,377	2,332	2,253	2,262	2,304	2,378	2,376
Calvert	97	113	101	100	91	99	80	84	100	88	96	79	94
Caroline	163	164	155	162	144	168	142	140	129	115	112	117	143
Carroll	165	180	137	180	175	172	160	152	142	158	161	135	160
Cecil	464	454	442	494	469	477	443	452	458	456	452	468	461
Charles	221	238	239	268	307	293	285	297	278	259	259	245	266
Dorchester	214	198	195	221	211	245	216	224	195	193	216	198	211
Frederick	392	399	387	364	356	371	364	359	389	372	348	376	373
Garrett	76	82	85	87	85	80	73	74	75	71	65	71	77
Harford	429	452	422	441	431	428	391	410	366	384	381	385	410
Howard	533	503	507	503	501	483	465	483	458	439	447	390	476
Kent	61	64	53	48	50	58	64	65	66	61	70	71	61
Montgomery	898	897	868	922	921	935	915	895	868	808	832	817	881
Prince George's	2,237	2,164	2,282	2,260	2,116	2,216	2,163	2,023	1,902	1,928	1,865	1,897	2,088
Queen Anne's	83	86	99	113	110	105	105	89	97	86	79	77	94
St. Mary's	593	563	556	584	560	584	523	514	521	452	422	397	522
Somerset	138	150	149	158	159	162	156	151	150	157	166	162	155
Talbot	48	38	36	40	43	44	48	43	41	38	34	40	41
Washington	389	420	399	152	467	469	441	458	438	432	466	486	418
Wicomico	562	601	616	624	591	627	555	550	532	524	551	534	572
Worcester	53	54	50	46	79	78	70	67	56	55	45	49	59
Baltimore City	10,310	10,230	10,135	10,318	10,251	10,395	10,035	9,674	9,697	9,480	9,512	9,848	9,990
State Totals	21,871	21,812	21,547	21,933	21,844	22,323	21,404	20,835	20,441	20,035	20,180	20,526	21,229

Temporary Cash Assistance: Paid Cases, Paid Recipients (Adults & Children), Net Expenditures

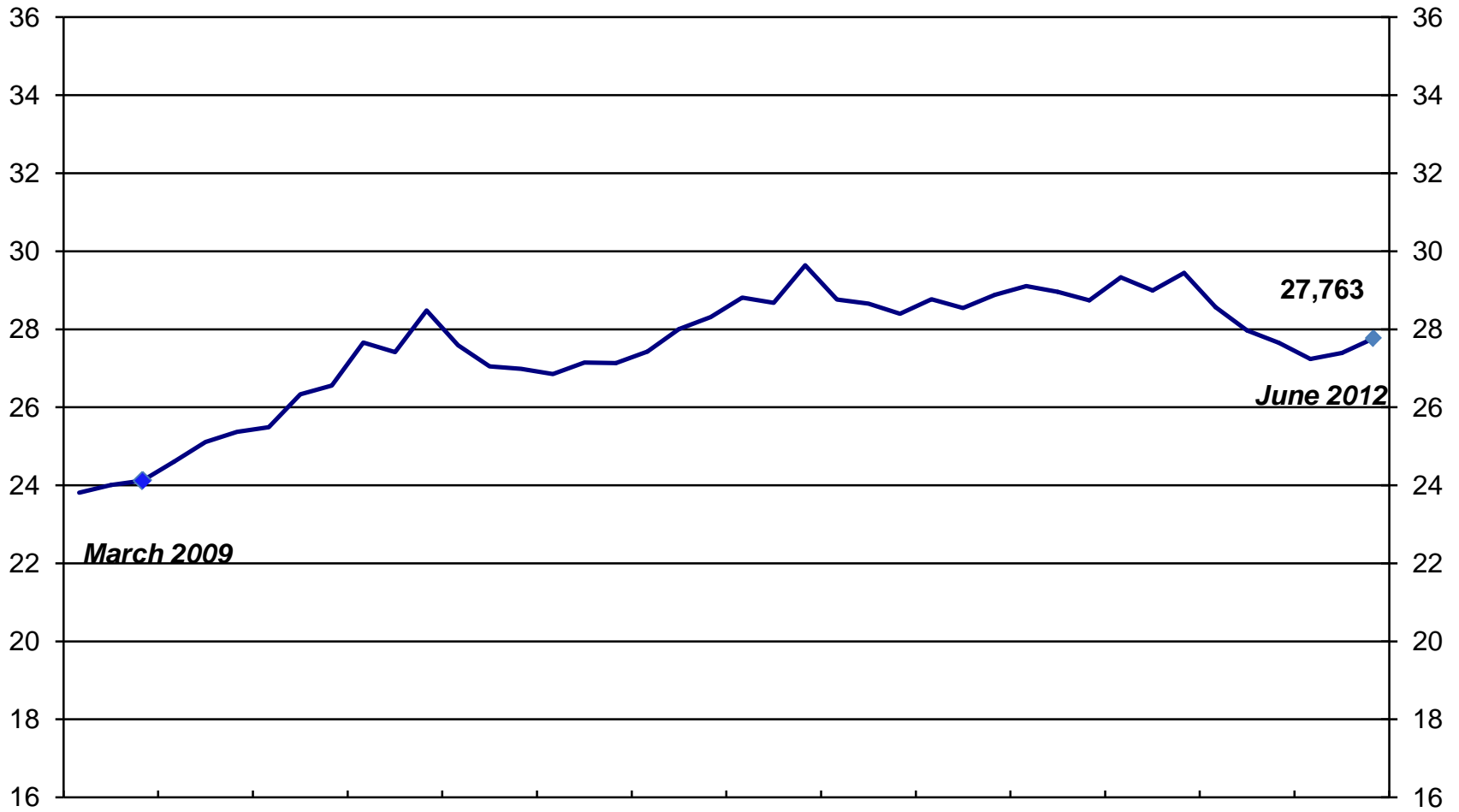
Child Paid Recipients	2011 July	2011 August	2011 September	2011 October	2011 November	2011 December	2012 January	2012 February	2012 March	2012 April	2012 May	2012 June	FY '11 Average
Allegany	508	562	549	609	587	594	548	568	538	578	608	628	573
Anne Arundel	2,746	2,770	2,706	2,820	2,807	2,882	2,838	2,735	2,699	2,614	2,679	2,666	2,747
Baltimore Co.	5,822	5,815	5,676	5,942	5,769	5,903	5,752	5,667	5,546	5,635	5,673	5,863	5,755
Calvert	263	278	260	250	230	255	224	224	256	241	237	215	244
Caroline	441	424	422	432	401	468	439	416	390	370	388	393	415
Carroll	422	444	432	445	445	433	414	411	389	413	406	367	418
Cecil	1,066	1,072	1,048	1,098	1,074	1,128	1,066	1,088	1,084	1,116	1,110	1,110	1,088
Charles	589	629	613	661	748	770	718	725	689	669	678	661	679
Dorchester	531	510	511	553	530	584	542	582	522	506	541	499	534
Frederick	951	942	977	897	902	920	888	880	935	916	888	922	918
Garrett	160	162	171	172	174	166	154	150	148	156	157	172	162
Harford	1,109	1,171	1,105	1,132	1,113	1,135	1,056	1,107	1,016	1,052	1,089	1,065	1,096
Howard	1,168	1,137	1,135	1,112	1,115	1,091	1,073	1,088	1,028	960	1,032	943	1,074
Kent	127	143	127	123	131	150	159	159	159	156	176	166	148
Montgomery	2,356	2,335	2,273	2,371	2,337	2,361	2,316	2,268	2,320	2,176	2,166	2,122	2,283
Prince George's	6,051	5,868	6,109	6,072	5,760	5,880	5,760	5,485	5,193	5,300	5,197	5,239	5,660
Queen Anne's	204	216	245	267	263	244	249	196	219	204	185	187	223
St. Mary's	1,271	1,236	1,231	1,270	1,223	1,262	1,181	1,114	1,129	1,016	984	950	1,156
Somerset	322	370	373	376	391	385	376	360	353	374	389	406	373
Talbot	149	137	125	130	140	146	143	155	143	141	141	156	142
Washington	1,093	1,129	1,122	1,221	1,271	1,252	1,194	1,225	1,177	1,167	1,289	1,313	1,204
Wicomico	1,388	1,452	1,468	1,484	1,423	1,506	1,405	1,414	1,376	1,357	1,403	1,383	1,422
Worcester	178	170	170	160	202	194	188	177	164	171	146	154	173
Baltimore City	23,291	23,226	22,769	23,150	22,962	23,408	22,824	22,087	22,091	21,773	21,839	22,560	22,665
State Totals	52,206	52,198	51,617	52,747	51,998	53,117	51,507	50,281	49,564	49,061	49,401	50,140	51,153

Temporary Cash Assistance: Paid Cases, Paid Recipients (Adults & Children), Net Expenditures

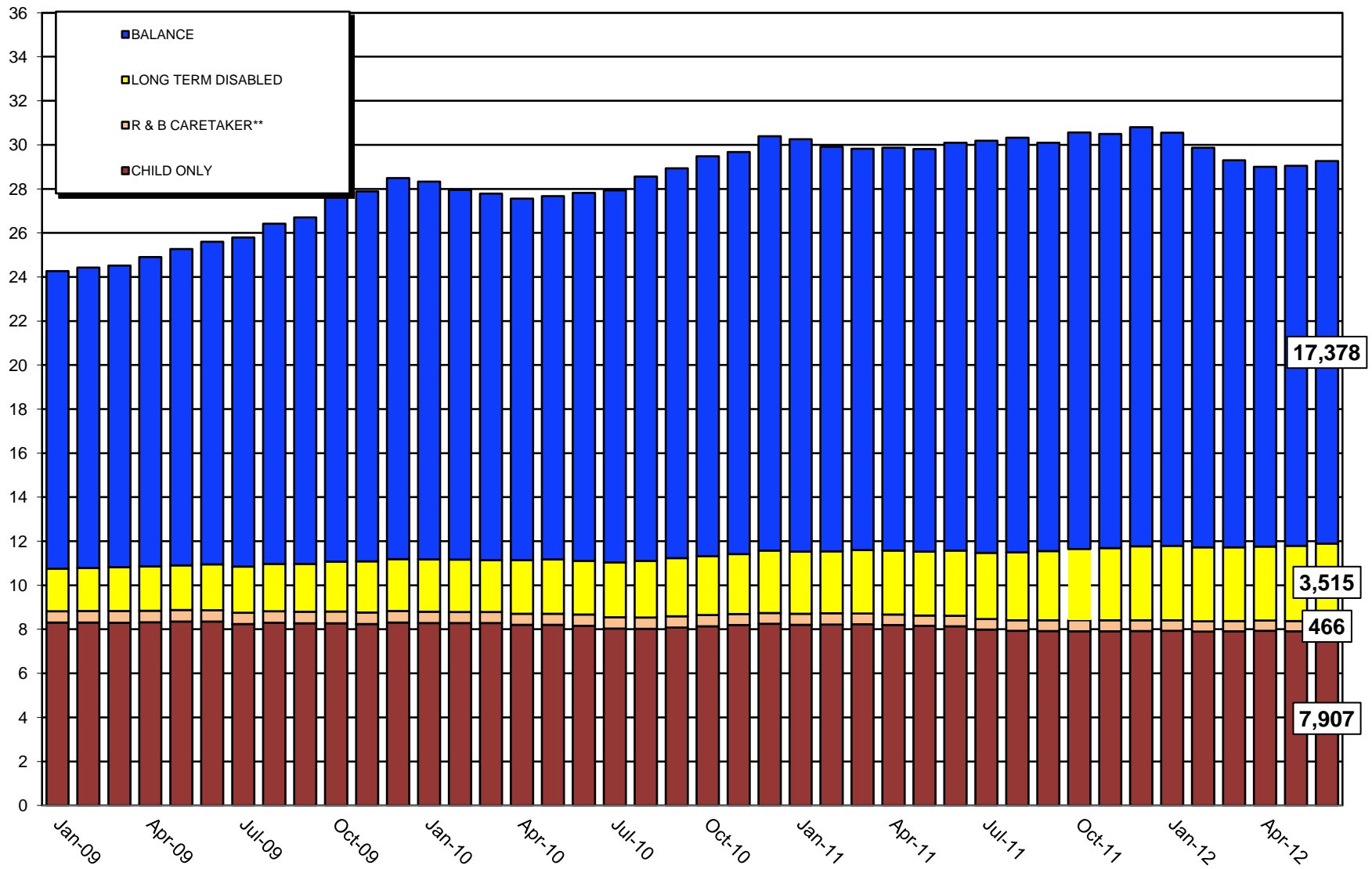
Net Expenditures	2011 July	2011 August	2011 September	2011 October	2011 November	2011 December	2012 January	2012 February	2012 March	2012 April	2012 May	2012 June	FY '12 Average
Allegany	130,316	138,151	138,601	148,491	147,741	153,574	145,808	145,401	139,632	148,166	158,257	164,646	\$146,565
Anne Arundel	640,217	641,024	616,554	653,434	655,504	671,009	667,121	645,073	621,567	610,743	635,291	627,187	\$640,394
Baltimore Co.	1,468,595	1,476,626	1,407,317	1,486,476	1,452,834	1,484,217	1,452,975	1,434,047	1,376,219	1,396,398	1,402,834	1,435,377	\$1,439,493
Calvert	65,827	70,677	67,664	63,299	60,258	60,890	55,740	56,409	59,737	60,188	61,492	50,334	\$61,043
Caroline	107,330	105,527	103,071	105,502	98,212	108,004	106,073	100,788	92,740	88,415	87,654	92,488	\$99,650
Carroll	109,214	109,734	108,278	111,991	111,343	109,612	106,127	102,408	94,262	104,088	103,165	94,848	\$105,422
Cecil	271,328	273,362	264,973	280,984	281,322	283,317	279,473	277,912	272,110	274,392	275,639	275,420	\$275,853
Charles	143,617	151,906	148,273	165,351	186,535	183,357	175,083	179,527	171,687	167,356	166,198	159,443	\$166,528
Dorchester	127,458	123,221	119,031	130,278	130,494	142,427	135,199	139,345	128,793	124,148	130,490	123,624	\$129,542
Frederick	226,751	228,035	220,666	214,307	211,283	216,600	212,549	211,486	222,965	221,559	212,636	219,443	\$218,190
Garrett	41,598	43,156	44,319	45,031	44,137	41,561	40,456	38,390	36,104	37,130	36,455	40,057	\$40,699
Harford	274,404	284,777	271,148	282,682	276,831	277,910	261,156	273,882	242,280	250,038	258,211	255,050	\$267,364
Howard	285,276	276,159	264,669	271,259	276,359	266,699	262,023	264,323	249,518	238,929	248,700	218,358	\$260,189
Kent	30,213	32,207	27,812	27,993	29,346	34,861	38,016	37,758	35,669	35,659	39,693	39,004	\$34,019
Montgomery	555,054	547,114	517,031	553,682	557,343	554,973	549,305	547,295	533,498	509,300	509,073	503,831	\$536,458
Prince George's	1,462,599	1,418,543	1,398,871	1,468,318	1,413,060	1,450,387	1,415,820	1,331,399	1,182,394	1,267,926	1,249,151	1,246,662	\$1,358,761
Queen Anne's	51,884	53,556	55,700	61,776	62,959	59,490	57,235	46,315	49,709	49,025	45,132	44,095	\$53,073
St. Mary's	308,538	300,509	295,443	312,129	299,041	303,391	281,036	269,674	255,496	241,912	230,888	223,651	\$276,809
Somerset	77,984	88,484	86,400	92,318	95,277	96,404	92,540	90,304	87,767	90,571	94,504	93,876	\$90,536
Talbot	36,221	31,478	30,108	32,300	33,193	34,332	36,047	37,154	35,266	34,229	33,869	34,921	\$34,093
Washington	260,382	266,488	252,570	278,762	294,272	295,594	285,363	289,095	270,901	276,402	292,216	302,495	\$280,378
Wicomico	334,213	351,534	349,217	358,496	350,521	369,022	341,120	338,865	329,427	325,725	336,562	322,954	\$342,305
Worcester	43,694	42,074	40,206	38,414	47,822	49,648	49,966	45,401	42,427	43,318	37,619	37,190	\$43,148
Baltimore City	5,833,063	5,819,186	5,604,130	5,802,078	5,768,438	5,880,007	5,740,070	5,579,254	5,450,575	5,439,254	5,446,251	5,503,784	\$5,655,507
State Totals*	12,883,847	12,879,630	12,920,943	13,048,594	12,924,212	13,119,249	12,882,774	12,284,956	11,883,168	12,018,839	12,091,980	12,108,738	\$12,587,244

*DHR reports local statistics based on preliminary data. State totals for recipients/expenditures are later revised in bold when final data are available.

TCA CASES



TCA CORE CASELOAD



SCALE X 1,000

** Room and Board Schedule Cases with Non-Parent Caretakers

Food Supplement Program: Applications Received, Applications Approved and Applications Not Approved

Applications Received	2011 July	2011 August	2011 September	2011 October	2011 November	2011 December	2012 January	2011 February	2011 March	2011 April	2011 May	2011 June	FY '12 Average
Allegany	377	452	470	416	413	394	456	375	408	368	417	384	411
Anne Arundel	1,489	1,674	1,623	1,602	1,828	1,607	1,994	1,563	1,734	1,685	1,816	1,889	1,709
Baltimore Co.	2,928	3,100	2,810	2,578	2,655	2,619	3,445	2,570	2,647	2,568	2,799	2,850	2,797
Calvert	341	348	364	299	311	328	360	303	306	293	344	327	327
Caroline	172	202	186	203	176	155	230	165	160	134	167	128	173
Carroll	357	421	344	361	350	319	427	373	409	344	395	373	373
Cecil	508	634	608	602	614	503	692	593	547	512	551	589	579
Charles	566	584	514	565	443	427	538	491	566	419	517	608	520
Dorchester	247	317	290	257	268	225	249	209	214	205	225	235	245
Frederick	631	776	721	682	675	649	820	665	679	629	611	706	687
Garrett	109	99	117	106	104	109	104	106	89	93	95	100	103
Harford	807	868	951	835	854	775	1,105	816	889	847	845	829	868
Howard	564	597	568	599	516	509	668	550	521	581	629	654	580
Kent	79	90	96	73	92	117	121	81	84	78	72	84	89
Montgomery	2,206	2,606	2,460	2,364	2,290	2,193	2,538	2,194	2,438	2,147	2,292	2,316	2,337
Prince George's	4,575	4,751	4,153	4,121	3,698	3,391	3,840	3,370	3,718	3,819	3,800	3,956	3,933
Queen Anne's	164	190	154	174	163	131	198	152	125	123	151	161	157
St. Mary's	445	518	446	433	399	380	522	366	429	381	479	472	439
Somerset	177	186	168	176	174	115	226	147	169	139	187	175	170
Talbot	109	140	128	124	144	143	133	123	103	100	111	118	123
Washington	745	992	837	870	864	833	1,109	754	879	879	862	832	871
Wicomico	627	794	646	719	723	676	864	627	672	646	633	660	691
Worcester	220	225	283	328	335	290	350	243	203	204	204	200	257
Baltimore City	9,011	9,671	9,096	9,078	8,787	8,088	9,301	7,943	8,987	8,631	9,223	9,478	8,941
State Totals	27,454	30,235	28,033	27,565	26,876	24,976	30,290	24,779	26,976	25,825	27,425	28,124	27,380

Food Supplement Program: Applications Received, Applications Approved and Applications Not Approved

Applications Approved	2011 July	2011 August	2011 September	2011 October	2011 November	2011 December	2012 January	2011 February	2011 March	2011 April	2011 May	2011 June	FY '12 Average
Allegany	328	360	394	356	349	369	408	312	310	316	370	349	352
Anne Arundel	1,289	1,508	1,331	1,350	1,506	1,434	1,624	1,250	1,287	1,450	1,461	1,479	1,414
Baltimore Co.	2,782	3,004	2,507	2,607	2,695	2,598	3,115	2,428	2,428	2,214	2,671	2,501	2,629
Calvert	302	274	297	245	251	268	329	236	238	204	295	253	266
Caroline	150	168	156	185	161	1,484	196	150	149	114	173	109	266
Carroll	274	335	307	260	289	287	320	341	345	287	336	320	308
Cecil	420	540	504	470	508	472	527	547	542	410	446	425	484
Charles	461	446	419	437	417	372	442	342	355	409	463	520	424
Dorchester	213	240	257	224	250	234	210	204	205	185	191	225	220
Frederick	490	586	569	583	590	569	673	562	568	566	507	568	569
Garrett	94	84	84	90	81	92	91	88	89	80	90	82	87
Harford	652	697	746	696	676	683	856	673	688	670	714	660	701
Howard	453	457	408	476	408	417	532	451	445	496	520	527	466
Kent	86	71	80	71	79	111	91	92	90	69	63	71	81
Montgomery	1,692	1,996	1,958	1,902	1,897	1,769	1,842	1,761	1,788	1,655	1,786	1,720	1,814
Prince George's	3,794	3,905	3,415	2,989	3,057	2,935	2,947	3,107	3,077	3,254	3,099	3,021	3,217
Queen Anne's	124	155	135	147	145	116	161	124	122	104	123	132	132
St. Mary's	380	390	381	377	325	329	452	306	297	328	401	409	365
Somerset	156	156	147	162	152	110	178	134	127	112	158	163	146
Talbot	108	126	94	101	126	140	98	110	109	92	79	113	108
Washington	609	769	692	656	739	689	917	670	674	738	715	701	714
Wicomico	534	662	547	575	627	621	688	547	551	536	548	577	584
Worcester	172	198	231	276	284	264	297	222	225	184	170	173	225
Baltimore City	7,906	8,102	7,530	7,337	7,617	7,148	7,483	7,040	7,041	7,437	8,041	8,462	7,595
State Totals	23,469	25,229	23,189	22,572	23,229	23,511	24,477	21,697	21,750	21,910	23,420	23,560	23,168

Food Supplement Program: Applications Received, Applications Approved and Applications Not Approved

Applications Not Approved	2011 July	2011 August	2011 September	2011 October	2011 November	2011 December	2012 January	2011 February	2011 March	2011 April	2011 May	2011 June	FY '12 Average
Allegany	67	115	132	120	100	96	106	77	80	97	85	87	97
Anne Arundel	483	589	611	610	574	496	528	547	552	502	532	466	541
Baltimore Co.	539	752	731	814	721	607	586	556	641	557	595	640	645
Calvert	60	75	88	82	73	78	74	54	76	73	89	73	75
Caroline	25	38	38	32	41	44	27	46	31	36	38	19	35
Carroll	87	102	113	97	96	115	118	115	122	87	103	86	103
Cecil	113	133	132	124	142	146	117	144	104	133	129	134	129
Charles	139	164	180	181	194	178	172	156	184	204	201	201	180
Dorchester	41	57	66	48	50	57	54	39	41	23	34	39	46
Frederick	195	238	229	232	197	252	220	208	180	167	154	161	203
Garrett	18	25	26	32	22	28	25	25	28	22	22	22	25
Harford	250	223	242	270	245	220	261	280	238	270	275	243	251
Howard	159	167	157	210	202	173	180	200	190	160	160	163	177
Kent	9	16	20	19	19	18	22	23	35	18	13	16	19
Montgomery	751	842	784	805	739	719	715	772	883	807	786	727	778
Prince George's	1,112	1,248	1,218	1,148	1,246	1,373	1,238	1,279	1,434	1,308	1,246	1,310	1,263
Queen Anne's	44	44	37	33	38	38	28	51	44	21	30	33	37
St. Mary's	99	87	164	99	97	101	105	92	77	83	81	114	100
Somerset	35	28	42	37	39	29	37	30	22	40	33	39	34
Talbot	17	28	19	31	25	27	28	22	22	19	17	37	24
Washington	182	223	230	190	226	195	254	196	164	168	212	173	201
Wicomico	115	163	161	116	154	147	163	165	137	108	134	131	141
Worcester	53	50	41	56	62	61	64	63	51	56	31	28	51
Baltimore City	1,503	1,709	1,608	1,611	1,657	1,601	1,842	1,524	1,691	1,506	1,629	1,861	1,645
State Totals	6,096	7,116	7,069	6,997	6,959	6,799	6,964	6,664	7,027	6,465	6,629	6,803	6,799

Food Supplement Program: Cases, Participants and Issuances

FSP Cases	2011 July	2011 August	2011 September	2011 October	2011 November	2011 December	2012 January	2012 February	2012 March	2012 April	2012 May	2012 June	FY '12 Average
Allegany	6,372	6,443	6,553	6,622	6,649	6,719	6,755	6,768	6,825	6,853	6,883	6,848	6,691
Anne Arundel	17,500	17,831	18,075	18,228	18,401	18,596	18,854	18,910	18,972	19,165	19,317	19,508	18,613
Baltimore Co.	43,699	44,687	44,699	45,535	45,695	46,077	46,541	46,293	46,051	46,024	46,546	47,259	45,759
Calvert	4,232	4,300	4,349	4,353	4,312	4,316	4,357	4,346	4,349	4,332	4,356	4,375	4,331
Caroline	2,650	2,692	2,723	2,768	2,781	2,817	2,862	2,871	2,868	2,854	2,882	2,853	2,802
Carroll	4,869	5,009	5,056	5,081	5,115	5,150	5,181	5,208	5,222	5,195	5,219	5,281	5,132
Cecil	6,188	6,286	6,301	6,351	6,338	6,369	6,398	6,427	6,406	6,408	6,408	6,423	6,359
Charles	6,860	6,943	6,997	7,116	7,170	7,209	7,257	7,134	7,245	7,279	7,305	7,408	7,160
Dorchester	4,241	4,255	4,276	4,306	4,360	4,436	4,448	4,431	4,459	4,454	4,432	4,464	4,380
Frederick	7,465	7,559	7,608	7,736	7,840	7,925	8,059	8,094	8,123	8,204	8,218	8,295	7,927
Garrett	1,897	1,917	1,917	1,931	1,936	1,947	1,980	2,008	2,010	2,013	2,010	2,012	1,965
Harford	9,108	9,190	9,328	9,392	9,411	9,496	9,619	9,607	9,624	9,662	9,748	9,803	9,499
Howard	6,759	6,889	6,906	7,020	7,007	7,003	7,128	7,192	7,211	7,319	7,407	7,505	7,112
Kent	1,455	1,471	1,480	1,459	1,444	1,456	1,463	1,487	1,488	1,473	1,449	1,457	1,465
Montgomery	27,996	28,364	28,785	29,114	29,340	29,571	29,688	29,910	30,185	30,296	30,346	30,458	29,504
Prince George's	43,603	44,679	44,911	45,058	44,418	44,174	43,395	43,457	43,520	44,025	44,025	44,286	44,129
Queen Anne's	1,925	1,981	1,984	2,009	2,026	2,037	2,098	2,111	2,102	2,115	2,097	2,117	2,050
St. Mary's	5,901	6,032	6,073	6,121	6,126	6,144	6,182	6,113	6,144	6,146	6,164	6,244	6,116
Somerset	2,599	2,641	2,656	2,681	2,701	2,712	2,733	2,717	2,731	2,699	2,700	2,729	2,692
Talbot	1,929	1,966	1,971	1,990	2,026	2,079	2,080	2,098	2,112	2,118	2,094	2,103	2,047
Washington	9,504	9,729	9,811	9,784	9,782	9,811	9,949	9,918	10,000	10,059	10,158	10,314	9,902
Wicomico	8,627	8,788	8,831	8,922	9,014	9,089	9,212	9,277	9,342	9,358	9,347	9,401	9,101
Worcester	3,100	3,101	3,111	3,209	3,287	3,364	3,477	3,527	3,549	3,568	3,513	3,458	3,355
Baltimore City	112,462	114,173	114,876	115,647	116,195	116,781	116,841	116,778	117,052	117,346	117,675	118,832	116,222
State Totals	340,941	346,926	349,277	352,433	353,374	355,278	356,557	356,682	357,590	358,965	360,299	363,433	354,313

Food Supplement Program: Cases, Participants and Issuances

FSP Participants	2011 July	2011 August	2011 September	2011 October	2011 November	2011 December	2012 January	2012 February	2012 March	2012 April	2012 May	2012 June	FY '12 Average
Allegany	13,399	13,413	13,563	13,724	13,758	13,823	13,825	13,803	13,849	13,889	13,928	13,922	13,741
Anne Arundel	36,355	36,971	37,410	37,905	38,072	38,230	38,666	38,647	38,693	38,939	39,142	39,557	38,216
Baltimore Co.	91,329	92,995	93,031	95,003	94,997	95,418	95,819	95,161	94,367	94,239	95,088	96,517	94,497
Calvert	8,900	9,020	9,119	9,114	9,038	8,960	9,023	8,982	8,939	8,925	8,928	8,967	8,993
Caroline	6,084	6,172	6,219	6,311	6,285	6,340	6,409	6,424	6,406	6,376	6,428	6,351	6,317
Carroll	10,625	10,909	10,990	11,038	11,059	11,085	11,044	11,028	11,015	10,984	11,076	11,205	11,005
Cecil	14,174	14,354	14,324	14,475	14,368	14,391	14,412	14,387	14,300	14,202	14,159	14,228	14,315
Charles	14,401	14,514	14,643	14,948	15,037	15,145	15,135	14,866	15,055	15,188	15,211	15,477	14,968
Dorchester	8,163	8,202	8,221	8,277	8,333	8,445	8,474	8,486	8,532	8,534	8,456	8,538	8,388
Frederick	16,455	16,565	16,650	16,961	17,155	17,315	17,442	17,494	17,533	17,694	17,712	17,975	17,246
Garrett	4,384	4,392	4,370	4,398	4,363	4,353	4,414	4,459	4,441	4,454	4,441	4,474	4,412
Harford	19,919	20,050	20,397	20,517	20,524	20,594	20,656	20,687	20,676	20,730	20,831	20,876	20,538
Howard	14,687	14,938	14,961	15,216	15,206	15,148	15,368	15,444	15,457	15,645	15,805	16,001	15,323
Kent	2,933	2,920	2,944	2,906	2,873	2,904	2,908	2,962	2,935	2,907	2,872	2,881	2,912
Montgomery	57,665	58,460	59,302	60,188	60,441	60,796	60,959	61,278	61,752	61,976	62,039	62,207	60,589
Prince George's	93,687	95,790	96,063	96,365	94,472	93,739	91,591	91,480	91,559	92,533	92,183	92,814	93,523
Queen Anne's	4,186	4,276	4,275	4,320	4,320	4,302	4,386	4,409	4,384	4,396	4,365	4,421	4,337
St. Mary's	12,521	12,749	12,851	12,983	13,053	13,041	13,034	12,912	12,925	12,874	12,871	13,009	12,902
Somerset	5,445	5,515	5,532	5,559	5,590	5,638	5,663	5,622	5,638	5,569	5,594	5,662	5,586
Talbot	3,802	3,848	3,834	3,873	3,916	4,019	4,009	4,030	4,036	4,054	4,018	4,014	3,954
Washington	21,219	21,593	21,719	21,648	21,604	21,561	21,773	21,703	21,820	21,939	22,145	22,472	21,766
Wicomico	18,689	18,971	19,028	19,261	19,324	19,377	19,473	19,633	19,799	19,872	19,894	20,003	19,444
Worcester	6,471	6,498	6,495	6,648	6,772	6,888	7,096	7,184	7,204	7,253	7,192	7,109	6,901
Baltimore City	203,323	205,854	206,663	208,043	208,694	209,163	208,175	207,808	207,990	208,548	208,379	210,827	207,789
State Totals	688,816	698,969	702,604	709,681	709,254	710,675	709,754	708,889	709,305	711,720	712,757	719,507	707,661

Food Supplement Program: Cases, Participants and Issuances

Net Expenditures	2011 July	2011 August	2011 September	2011 October	2011 November	2011 December	2012 January	2012 February	2012 March	2012 April	2012 May	2012 June	FY '12 Average
Allegany	1,541.6	1,549.8	1,555.4	1,572.3	1,573.6	1,579.0	1,560.0	1,567.9	1,566.7	1,582.0	1,586.5	1,578.1	\$1,567.7
Anne Arundel	4,528.4	4,652.3	4,644.4	4,729.5	4,757.1	4,782.0	4,745.3	4,785.8	4,788.8	4,826.8	4,871.7	4,907.4	\$4,751.6
Baltimore Co.	11,458.0	11,807.2	11,654.0	12,035.3	11,987.6	11,998.7	11,872.3	11,885.5	11,768.1	11,767.5	11,922.8	12,138.8	\$11,858.0
Calvert	1,138.3	1,285.8	1,162.6	1,186.9	1,160.1	1,141.5	1,134.7	1,134.3	1,124.9	1,127.8	1,124.5	1,121.9	\$1,153.6
Caroline	726.5	732.4	734.4	752.3	751.0	755.6	753.0	764.8	762.5	760.3	760.0	758.0	\$750.9
Carroll	1,292.0	1,325.7	1,329.3	1,348.1	1,332.6	1,331.4	1,314.8	1,306.4	1,305.3	1,313.8	1,322.6	1,348.6	\$1,322.5
Cecil	1,776.8	1,804.9	1,781.3	1,808.8	1,803.9	1,791.8	1,759.5	1,776.4	1,766.8	1,761.4	1,748.4	1,750.4	\$1,777.5
Charles	1,809.5	1,845.1	1,852.1	1,898.8	1,911.3	1,917.5	1,898.3	1,871.9	1,891.2	1,905.1	1,899.2	1,928.7	\$1,885.7
Dorchester	1,023.4	1,066.9	1,020.5	1,034.2	1,038.7	1,053.0	1,038.9	1,046.6	1,051.4	1,057.9	1,053.2	1,052.9	\$1,044.8
Frederick	2,019.6	2,019.0	2,021.2	2,056.8	2,068.5	2,088.1	2,083.7	2,097.7	2,103.0	2,125.8	2,134.7	2,186.2	\$2,083.7
Garrett	468.9	472.1	465.1	469.8	465.7	463.3	463.2	470.2	467.6	464.2	458.8	455.0	\$465.3
Harford	2,400.9	2,539.1	2,432.5	2,461.3	2,451.5	2,448.4	2,399.8	2,447.7	2,445.0	2,447.3	2,462.4	2,462.8	\$2,449.9
Howard	1,833.3	1,876.5	1,877.6	1,904.9	1,899.1	1,885.6	1,874.3	1,891.7	1,905.5	1,926.5	1,948.1	1,981.5	\$1,900.4
Kent	348.6	355.6	349.1	353.3	346.4	347.8	343.6	349.0	345.5	340.0	338.8	340.2	\$346.5
Montgomery	6,730.2	6,826.8	6,908.7	7,033.7	7,024.0	7,065.5	6,975.8	7,037.6	7,082.5	7,125.6	7,112.7	7,134.1	\$7,004.8
Prince George's	11,949.3	12,247.8	12,256.3	12,370.9	12,158.4	12,033.5	11,593.8	11,633.8	11,628.4	11,768.5	11,761.9	11,902.1	\$11,942.1
Queen Anne's	507.1	515.1	513.1	522.4	521.5	526.5	525.5	539.2	537.5	537.7	524.9	532.1	\$525.2
St. Mary's	1,574.4	1,934.1	1,611.8	1,631.0	1,633.4	1,628.3	1,599.9	1,602.9	1,601.7	1,602.8	1,596.9	1,615.2	\$1,636.0
Somerset	673.0	687.0	681.9	685.3	691.2	695.6	684.0	691.5	692.8	687.8	689.7	698.4	\$688.2
Talbot	439.7	437.8	438.0	442.4	447.9	450.3	447.8	455.8	461.9	461.6	456.6	461.6	\$450.1
Washington	2,576.9	2,623.8	2,636.6	2,636.6	2,599.7	2,605.1	2,564.6	2,581.6	2,596.4	2,618.5	2,637.6	2,677.6	\$2,612.9
Wicomico	2,321.9	2,358.5	2,347.0	2,377.9	2,376.4	2,389.5	2,365.2	2,402.3	2,413.4	2,426.3	2,419.4	2,425.1	\$2,385.2
Worcester	794.0	790.9	779.7	800.4	834.1	848.5	853.2	872.6	883.2	890.8	869.5	860.5	\$839.8
Baltimore City	27,731.1	28,797.8	28,183.0	28,494.0	28,579.0	28,623.6	28,107.8	28,172.5	28,143.4	1,790.0	28,250.9	28,543.9	\$26,118.1
State Totals*	87,663.4	90,552.1	89,235.7	90,606.8	90,412.5	90,450.0	88,959.0	89,385.8	89,333.6	63,315.9	89,951.6	90,861.3	\$87,560.6

*DHR reports local statistics based on preliminary data. State totals for FSP expenditures are later revised in bold when final data are available.

[DATA: x \$1,000]

TOTAL FSP Participants

June 2012



Temporary Disability Assistance Program: Applications Received, Applications Approved and Cases Closed

Applications Received	2011 July	2011 August	2011 September	2011 October	2011 November	2011 December	2012 January	2012 February	2012 March	2012 April	2012 May	2012 June	FY '12 Average
Allegany	36	44	49	55	46	38	66	50	56	37	58	61	50
Anne Arundel	176	191	164	145	157	156	205	203	208	209	214	212	187
Baltimore Co.	526	645	573	515	497	509	607	523	578	514	528	609	552
Calvert	39	34	36	50	35	36	33	26	47	40	33	44	38
Caroline	20	15	19	16	14	13	16	7	9	7	9	9	13
Carroll	58	77	54	69	63	51	75	72	49	63	69	57	63
Cecil	74	83	92	74	85	58	90	67	56	74	84	70	76
Charles	41	54	53	33	23	35	47	46	56	42	46	64	45
Dorchester	24	15	20	15	16	21	16	12	21	18	17	26	18
Frederick	63	108	112	107	73	65	109	116	97	94	73	104	93
Garrett	11	4	9	7	8	7	10	5	10	10	10	17	9
Harford	89	109	101	103	96	86	135	90	113	116	101	113	104
Howard	80	100	77	89	60	73	99	90	73	109	65	82	83
Kent	13	17	29	16	10	15	18	10	12	10	12	11	14
Montgomery	327	308	315	312	274	274	298	300	313	278	253	272	294
Prince George's	238	224	215	211	158	217	151	208	206	187	182	201	200
Queen Anne's	14	17	14	9	10	10	13	13	9	13	17	13	13
St. Mary's	61	71	69	78	41	44	73	62	65	65	57	69	63
Somerset	27	21	16	20	22	18	17	16	21	16	21	12	19
Talbot	10	9	11	7	15	5	13	19	10	9	12	8	11
Washington	84	171	131	132	123	124	173	118	141	131	134	161	135
Wicomico	62	71	68	63	66	59	67	65	55	53	49	65	62
Worcester	23	31	29	22	39	27	30	20	22	25	26	24	27
Baltimore City	1,911	2,085	1,911	1,923	1,695	1,818	1,965	1,767	1,866	1,844	1,778	1,877	1,870
State Totals	4,007	4,504	4,167	4,071	3,626	3,759	4,326	3,905	4,093	3,964	3,848	4,181	4,038

Temporary Disability Assistance Program: Applications Received, Applications Approved and Cases Closed

Applications Approved	2011	2011	2011	2011	2011	2011	2012	2012	2012	2012	2012	2012	FY '12
	July	August	September	October	November	December	January	February	March	April	May	June	Average
Allegany	16	17	17	26	19	21	22	27	23	15	19	28	21
Anne Arundel	43	57	43	45	38	42	40	61	68	56	54	47	50
Baltimore Co.	93	117	108	103	112	103	96	125	149	102	117	104	111
Calvert	10	7	13	12	17	7	16	11	11	9	5	8	11
Caroline	7	5	9	9	8	3	6	7	3	5	9	8	7
Carroll	19	19	16	13	14	20	15	14	17	15	16	18	16
Cecil	22	40	35	32	36	42	21	24	30	31	27	22	30
Charles	8	14	21	11	6	8	7	20	11	20	15	9	13
Dorchester	11	7	6	7	5	6	9	5	3	7	13	13	8
Frederick	15	18	25	12	38	9	17	18	30	29	33	21	22
Garrett	9	5	6	3	6	10	9	4	4	4	5	7	6
Harford	25	32	29	20	31	20	27	33	23	21	24	14	25
Howard	18	21	14	18	23	18	10	20	40	49	17	14	22
Kent	3	5	2	5	3	4	5	4	4	5	4	5	4
Montgomery	45	56	59	63	46	56	34	50	52	60	41	29	49
Prince George's	39	55	26	35	37	35	20	31	46	31	33	41	36
Queen Anne's	7	3	1	7	0	2	2	4	6	4	6	4	4
St. Mary's	25	19	27	25	21	21	19	19	21	15	14	21	21
Somerset	14	9	7	8	9	10	12	10	9	11	8	4	9
Talbot	2	3	2	4	1	7	4	7	7	2	6	0	4
Washington	28	43	27	21	20	27	37	31	30	29	24	33	29
Wicomico	23	25	28	21	23	24	22	34	24	20	19	20	24
Worcester	4	12	6	6	8	10	12	16	9	5	7	9	9
Baltimore City	942	1,013	914	962	837	962	838	842	897	844	827	894	898
State Totals	1,428	1,602	1,441	1,468	1,358	1,467	1,300	1,417	1,517	1,389	1,343	1,373	1,425

Temporary Disability Assistance Program: Applications Received, Applications Approved and Cases Closed

Applications Not Approved	2011 July	2011 August	2011 September	2011 October	2011 November	2011 December	2012 January	2012 February	2012 March	2012 April	2012 May	2012 June	FY '12 Average
Allegany	40	45	33	43	37	24	49	35	49	37	38	31	38
Anne Arundel	107	141	126	134	113	95	125	139	155	146	146	148	131
Baltimore Co.	501	626	605	536	505	474	493	427	534	445	448	499	508
Calvert	34	35	27	37	31	33	32	21	33	33	40	29	32
Caroline	7	12	12	13	9	11	10	10	9	2	8	3	9
Carroll	40	43	38	42	35	53	42	53	38	39	42	53	43
Cecil	53	53	45	37	46	57	51	58	54	49	36	56	50
Charles	37	41	36	43	34	46	30	49	40	45	35	50	41
Dorchester	26	21	18	12	12	15	16	16	11	16	10	19	16
Frederick	72	81	82	97	94	81	91	101	99	95	82	66	87
Garrett	9	3	2	2	2	7	2	6	0	8	10	6	5
Harford	66	77	80	97	86	77	84	78	116	81	101	99	87
Howard	73	90	70	68	71	61	77	97	79	75	80	66	76
Kent	16	18	15	17	13	8	14	22	10	16	12	11	14
Montgomery	278	307	316	259	254	291	251	284	286	256	259	255	275
Prince George's	171	214	194	167	195	178	187	178	239	218	180	214	195
Queen Anne's	11	16	14	12	7	10	11	11	5	8	7	15	11
St. Mary's	33	51	46	60	40	43	35	43	44	56	51	50	46
Somerset	11	12	18	15	12	9	17	12	10	11	11	10	12
Talbot	8	7	5	13	6	6	11	7	18	8	7	4	8
Washington	101	132	93	114	118	123	135	113	125	109	107	121	116
Wicomico	38	51	50	36	50	48	57	53	38	48	53	31	46
Worcester	20	27	28	22	25	36	17	22	17	18	25	22	23
Baltimore City	1,197	1,242	1,170	1,178	1,118	1,029	1,057	1,061	1,135	1,084	1,213	1,108	1,133
State Totals	2,949	3,345	3,123	3,054	2,913	2,815	2,894	2,896	3,144	2,903	3,001	2,966	3,000

Temporary Disability Assistance Program: Applications Received, Applications Approved and Cases Closed

Cases Closed	2011 July	2011 August	2011 September	2011 October	2011 November	2011 December	2012 January	2012 February	2012 March	2012 April	2012 May	2012 June	FY '12 Average
Allegany	15	23	20	19	19	28	20	23	16	37	21	22	22
Anne Arundel	45	70	56	72	56	54	54	44	63	63	76	76	61
Baltimore Co.	131	125	149	113	124	105	102	119	96	104	119	105	116
Calvert	17	11	19	13	15	6	15	10	17	8	16	14	13
Caroline	11	6	9	9	13	9	10	7	10	9	8	6	9
Carroll	20	19	17	24	23	18	16	19	14	30	24	19	20
Cecil	39	40	44	36	33	32	45	31	52	45	50	22	39
Charles	8	8	13	8	22	8	9	21	12	24	18	15	14
Dorchester	5	4	12	10	5	13	5	5	8	8	9	17	8
Frederick	13	21	16	9	17	17	9	26	19	20	18	25	18
Garrett	9	4	5	9	6	8	6	6	6	6	5	6	6
Harford	15	30	27	26	32	29	28	23	29	39	44	28	29
Howard	9	15	18	15	26	14	19	20	23	19	25	24	19
Kent	6	2	2	5	6	4	10	2	5	1	8	10	5
Montgomery	68	60	60	65	75	37	55	68	69	62	50	58	61
Prince George's	69	69	59	57	57	48	41	41	55	47	47	50	53
Queen Anne's	13	6	8	8	3	7	6	4	3	4	6	4	6
St. Mary's	21	24	22	19	20	15	23	30	20	19	18	15	21
Somerset	11	7	7	10	6	7	11	11	5	13	14	8	9
Talbot	2	3	6	4	1	5	4	7	3	2	5	2	4
Washington	36	31	26	32	40	52	28	25	58	39	31	29	36
Wicomico	15	23	26	12	21	20	18	25	23	31	27	29	23
Worcester	17	7	13	4	14	8	10	7	9	1	9	7	9
Baltimore City	1,120	964	1,124	981	952	980	970	942	1,034	951	855	992	989
State Totals	1,715	1,572	1,758	1,560	1,586	1,524	1,514	1,516	1,649	1,582	1,503	1,583	1,589

Temporary Disability Assistance Program: Recipients and Net Expenditures

Total Recipients	2011 July	2011 August	2011 September	2011 October	2011 November	2011 December	2012 January	2012 February	2012 March	2012 April	2012 May	2012 June	FY '12 Average
Allegany	302	300	313	308	305	308	304	315	321	296	309	319	308
Anne Arundel	698	667	672	641	628	624	611	646	686	654	649	622	650
Baltimore Co.	1,420	1,406	1,384	1,381	1,362	1,396	1,378	1,410	1,485	1,444	1,441	1,456	1,414
Calvert	159	153	153	146	165	155	156	161	154	153	142	144	153
Caroline	106	109	118	110	109	104	101	102	101	92	100	105	105
Carroll	226	233	235	224	216	223	219	213	224	201	204	212	219
Cecil	359	380	377	389	401	426	385	388	382	369	354	358	381
Charles	177	185	205	205	175	185	182	190	187	181	186	177	186
Dorchester	133	140	130	133	132	134	137	139	132	137	138	144	136
Frederick	208	204	220	203	262	221	233	223	258	264	282	286	239
Garrett	71	72	72	67	78	80	81	79	81	77	79	79	76
Harford	348	350	365	356	371	337	353	375	350	324	311	298	345
Howard	217	216	208	217	214	222	209	219	252	289	251	237	229
Kent	48	52	51	52	48	52	46	50	49	57	53	48	51
Montgomery	626	627	620	650	591	625	586	584	563	570	561	526	594
Prince George's	551	532	496	470	467	450	425	422	430	414	403	393	454
Queen Anne's	78	67	62	72	59	58	54	55	63	63	62	62	63
St. Mary's	233	210	224	240	242	245	230	232	234	233	221	230	231
Somerset	88	90	86	90	89	99	99	101	106	111	102	105	97
Talbot	40	37	32	39	33	40	40	39	42	40	43	39	39
Washington	345	365	368	361	353	343	365	371	357	352	345	361	357
Wicomico	267	271	278	278	296	304	309	318	321	305	299	305	296
Worcester	90	97	91	91	83	94	96	108	100	107	107	113	98
Baltimore City	13,560	13,556	13,348	13,393	13,281	13,271	13,109	13,094	13,044	12,889	12,981	12,960	13,207
State Totals*	20,368	20,335	20,115	20,123	19,983	20,010	19,723	19,852	19,942	19,633	19,623	19,579	19,941

*DHR reports local statistics based on preliminary data. State totals for recipients/expenditures are later revised **in bold** when final data are available.

Temporary Disability Assistance Program: Recipients and Net Expenditures

Short Term Recipients	2011 July	2011 August	2011 September	2011 October	2011 November	2011 December	2012 January	2012 February	2012 March	2012 April	2012 May	2012 June	FY '12 Average
Allegany	28	34	32	29	34	28	29	29	26	18	16	25	27
Anne Arundel	179	159	150	145	136	149	141	156	193	194	192	181	165
Baltimore Co.	210	207	210	200	182	179	194	210	238	224	217	233	209
Calvert	20	15	17	18	20	26	26	28	23	25	24	24	22
Caroline	8	8	8	8	5	5	6	3	5	5	6	7	6
Carroll	53	52	46	37	30	39	28	28	34	30	36	43	38
Cecil	21	27	24	31	33	40	30	24	24	18	19	17	26
Charles	21	26	42	52	36	41	44	60	60	53	37	42	43
Dorchester	11	14	8	10	11	11	19	16	13	18	19	24	15
Frederick	17	17	22	25	55	41	33	33	37	39	45	33	33
Garrett	14	13	11	10	11	12	10	8	12	10	15	10	11
Harford	22	24	24	15	19	15	12	17	10	14	10	14	16
Howard	84	77	76	84	87	87	79	87	110	143	119	111	95
Kent	3	3	3	2	1	1	0	3	1	1	2	1	2
Montgomery	129	145	141	166	164	174	153	144	140	153	161	135	150
Prince George's	125	131	122	117	130	123	117	116	126	124	116	127	123
Queen Anne's	7	3	3	4	3	3	1	0	3	2	2	1	3
St. Mary's	45	43	41	42	44	44	41	35	43	27	25	24	38
Somerset	3	3	7	5	5	3	3	4	3	3	2	2	4
Talbot	13	13	11	9	9	9	5	3	4	5	5	4	8
Washington	13	24	23	26	18	24	30	32	34	26	28	34	26
Wicomico	68	69	61	47	34	31	32	21	23	21	17	16	37
Worcester	9	5	1	4	2	8	9	12	9	9	9	9	7
Baltimore City	1,053	982	936	845	779	723	653	676	720	770	771	791	808
State Totals	2,156	2,094	2,019	1,931	1,848	1,816	1,695	1,745	1,891	1,932	1,893	1,908	1,911

Temporary Disability Assistance Program: Recipients and Net Expenditures

Long Term Recipients	2011 July	2011 August	2011 September	2011 October	2011 November	2011 December	2012 January	2012 February	2012 March	2012 April	2012 May	2012 June	FY '12 Average
Allegany	274	266	281	279	271	280	275	286	295	278	293	294	281
Anne Arundel	519	508	522	496	492	475	470	490	493	460	457	440	485
Baltimore Co.	1,210	1,199	1,174	1,181	1,180	1,217	1,184	1,200	1,247	1,220	1,224	1,211	1,204
Calvert	139	138	136	128	145	129	130	133	131	128	118	120	131
Caroline	98	101	110	102	104	99	95	99	96	87	94	98	99
Carroll	173	181	189	187	186	184	191	185	190	171	168	169	181
Cecil	338	353	353	358	368	386	355	364	358	351	335	341	355
Charles	156	159	163	153	139	144	138	130	127	128	149	135	143
Dorchester	122	126	122	123	121	123	118	123	119	119	119	120	121
Frederick	191	187	198	178	207	180	200	190	221	225	237	237	204
Garrett	57	59	61	57	67	68	71	71	69	67	64	69	65
Harford	326	326	341	341	352	322	341	358	340	310	301	284	329
Howard	133	139	132	133	127	135	130	132	142	146	132	126	134
Kent	45	49	48	50	47	51	46	47	48	56	51	47	49
Montgomery	497	482	479	484	427	451	433	440	423	417	400	391	444
Prince George's	426	401	374	353	337	327	308	306	304	290	287	266	332
Queen Anne's	71	64	59	68	56	55	53	55	60	61	60	61	60
St. Mary's	188	167	183	198	198	201	189	197	191	206	196	206	193
Somerset	85	87	79	85	84	96	96	97	103	108	100	103	94
Talbot	27	24	21	30	24	31	35	36	38	35	38	35	31
Washington	332	341	345	335	335	319	335	339	323	326	317	324	331
Wicomico	199	202	217	231	262	273	277	297	298	284	282	289	259
Worcester	81	92	90	87	81	86	87	96	91	98	98	104	91
Baltimore City	12,507	12,574	12,412	12,548	12,502	12,548	12,456	12,418	12,324	12,119	12,210	12,168	12,399
State Totals	18,194	18,225	18,089	18,185	18,112	18,180	18,013	18,089	18,031	17,690	17,730	17,638	18,015

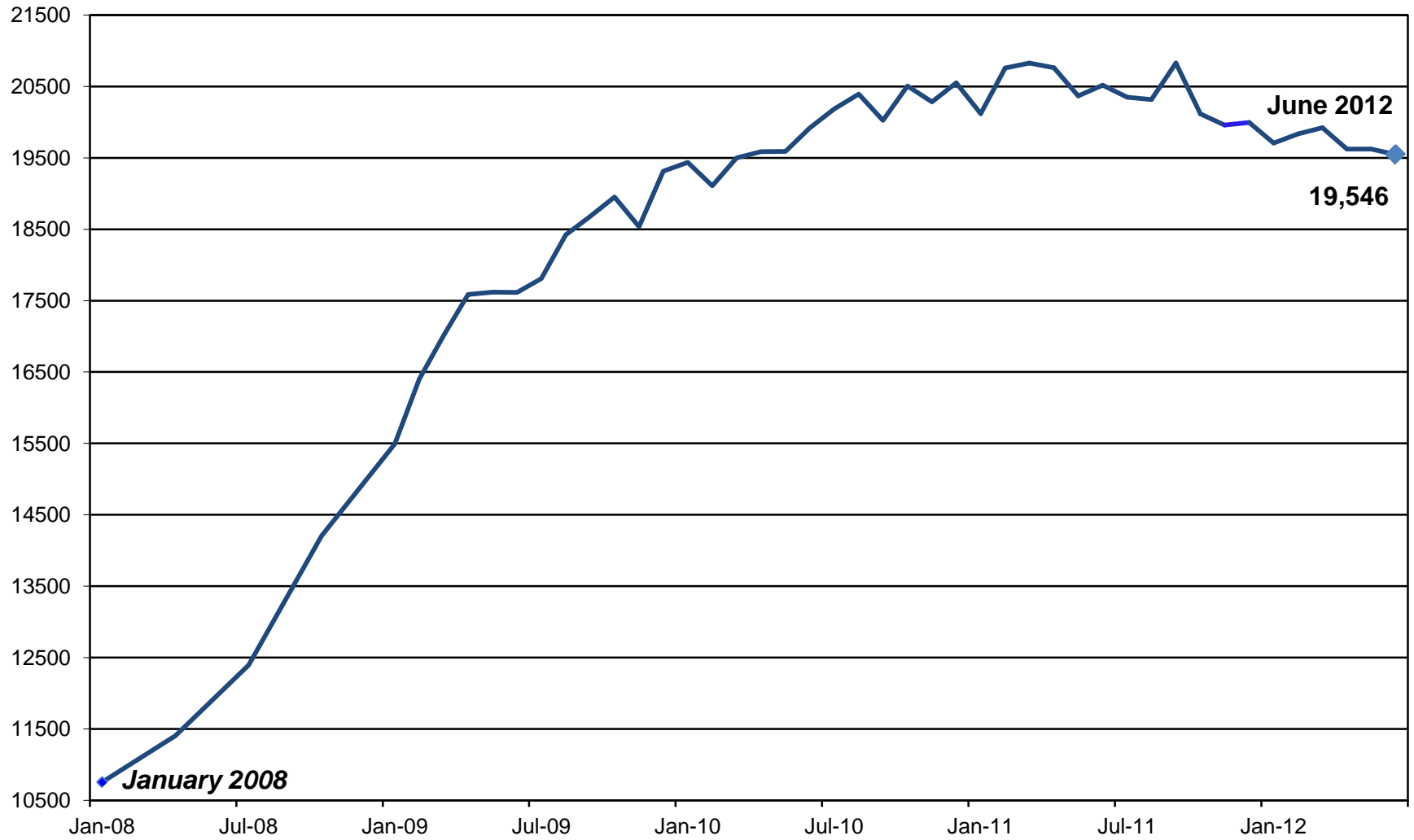
Temporary Disability Assistance Program: Recipients and Net Expenditures

Net Expenditures	2011 July	2011 August	2011 September	2011 October	2011 November	2011 December	2012 January	2012 February	2012 March	2012 April	2012 May	2012 June	FY '12 Average
Allegany	50.5	40.8	48.3	51.2	55.4	44.7	49.7	52.6	50.2	40.1	43.5		\$47.9
Anne Arundel	118.5	91.7	96.3	91.9	108.4	103.6	85.1	89.2	87.2	114.6	101.0	97.5	\$98.7
Baltimore Co.	227.0	206.4	215.8	215.5	221.4	243.6	216.5	221.7	243.6	241.0	227.0	242.4	\$226.8
Calvert	14.0	25.1	25.2	23.3	27.2	24.0	24.0	24.6	21.6	26.1	25.2	26.6	\$23.9
Caroline	11.8	17.2	20.3	18.5	20.0	5.8	17.6	18.6	17.6	17.0	10.6	7.0	\$15.2
Carroll	28.7	35.7	34.5	34.5	36.8	37.5	34.6	34.2	29.9	6.4	28.2	26.6	\$30.6
Cecil	60.6	65.9	63.2	66.1	66.9	64.0	65.3	66.6	64.8	65.2	59.8	61.9	\$64.2
Charles	15.8	31.2	30.3	27.1	22.0	33.2	25.4	24.0	31.9	25.6	28.9	20.9	\$26.4
Dorchester	22.8	18.4	22.4	22.6	23.9	13.9	21.7	22.6	17.2	14.7	16.9	24.1	\$20.1
Frederick	24.0	37.6	36.0	32.2	46.4	42.8	35.9	33.9	44.1	47.1	55.3	47.5	\$40.2
Garrett	5.5	13.3	11.2	10.3	13.6	13.8	13.0	12.9	14.9	6.9	14.6	14.6	\$12.1
Harford	60.9	48.9	62.7	61.2	59.8	54.6	62.6	64.9	52.2	47.4	41.7	51.7	\$55.7
Howard	39.4	31.7	24.4	24.6	39.6	40.3	21.4	24.4	40.5	53.2	39.6	39.2	\$34.8
Kent	8.9	9.2	8.9	9.2	8.9	8.3	8.5	8.7	8.1	10.5	7.8	8.1	\$8.8
Montgomery	88.4	86.4	85.4	83.5	92.5	89.3	78.0	81.0	71.0	71.7	74.8	65.7	\$80.6
Prince George's	75.0	72.4	68.3	65.2	84.2	64.1	56.7	56.1	62.7	57.2	56.3	65.1	\$65.3
Queen Anne's	10.5	12.1	10.8	12.5	9.0	9.8	9.7	10.1	6.8	11.6	3.3	10.7	\$9.7
St. Mary's	42.9	31.2	34.0	35.6	38.1	35.3	34.0	35.3	37.0	41.0	40.0	42.3	\$37.2
Somerset	42.9	31.2	34.0	15.7	16.4	16.2	17.8	17.9	18.2	16.8	18.9	16.9	\$21.9
Talbot	6.8	5.3	3.9	5.3	6.1	7.0	6.5	7.4	6.5	5.3	5.5	3.7	\$5.8
Washington	30.0	58.9	63.6	60.1	42.7	28.5	61.5	61.5	40.2	21.5	43.6	43.0	\$46.3
Wicomico	45.8	50.0	40.0	42.5	53.5	52.3	50.9	54.7	54.0	54.6	48.3	52.4	\$49.9
Worcester	16.4	17.2	16.5	16.1	15.8	17.4	16.1	17.8	19.0	19.8	16.7	20.9	\$17.5
Baltimore City	2,294.9	2,295.3	2,282.2	2,299.6	2,275.3	2,223.5	2,275.1	2,287.9	2,259.4	2,153.8	2,184.2	2,248.7	\$2,256.7
State Totals*	3,705.3	3,705.0	3,690.1	3,675.0	3,643.1	3,654.5	3,594.2	3,648.8	3,298.5	3,466.8	3,191.5	3,293.7	\$3,547.2

*DHR reports local statistics based on preliminary data. State totals for recipients/expenditures are later revised **in bold** when final data are available.

[DATA: x \$1,000]

TDAP CASELOAD: PAID CASES



Medical Assistance: Applications Received and Applications Approved

MA- Community Care

Applications Received	2011 July	2011 August	2011 September	2011 October	2011 November	2011 December	2012 January	2012 February	2012 March	2012 April	2012 May	2012 June	FY '12 Average
Allegany	352	409	455	387	367	338	392	370	379	365	433	425	389
Anne Arundel	1,481	1,668	1,638	1,435	1,466	1,395	1,606	1,577	1,640	1,656	1,650	1,535	1,562
Baltimore Co.	3,057	3,609	3,357	2,965	3,511	3,258	3,590	3,061	3,430	3,097	3,314	3,483	3,311
Calvert	368	372	398	410	362	311	358	375	381	345	358	352	366
Caroline	247	284	231	239	220	230	245	232	272	215	246	201	239
Carroll	405	435	415	406	400	390	447	391	399	379	394	436	408
Cecil	598	714	637	645	627	520	676	594	611	576	628	598	619
Charles	521	642	504	478	458	456	536	472	533	415	473	601	507
Dorchester	275	351	320	265	292	219	267	309	252	252	293	278	281
Frederick	684	836	779	718	629	684	764	820	774	689	817	802	750
Garrett	122	110	126	112	111	110	147	120	97	146	129	130	122
Harford	826	830	815	767	811	673	942	729	889	814	775	824	808
Howard	764	902	805	724	708	653	848	730	896	858	760	897	795
Kent	103	106	107	100	110	96	113	82	82	82	102	93	98
Montgomery	3,299	3,771	3,608	3,327	3,195	3,050	3,238	3,180	3,419	3,358	3,518	3,324	3,357
Prince George's	3,499	4,191	3,829	3,586	3,381	3,192	3,764	3,762	3,879	3,904	3,768	3,664	3,702
Queen Anne's	172	235	208	188	192	164	225	207	177	151	199	216	195
St. Mary's	408	452	438	408	379	327	490	363	390	474	411	453	416
Somerset	186	192	177	139	155	131	183	129	163	144	194	181	165
Talbot	137	175	184	148	151	138	187	164	161	135	174	166	160
Washington	701	987	855	768	729	737	978	745	865	779	795	717	805
Wicomico	731	806	685	723	706	624	805	646	746	737	657	699	714
Worcester	273	300	311	285	248	222	293	267	260	245	265	274	270
Baltimore City	7,583	8,381	7,991	7,592	7,355	6,814	7,584	7,334	8,082	8,108	7,635	7,764	7,685
State Totals	26,792	30,758	28,873	26,815	26,563	24,732	28,678	26,659	28,777	27,924	27,988	28,113	27,723

Medical Assistance: Applications Received and Applications Approved

MA- Community Care

Applications Approved	2011 July	2011 August	2011 September	2011 October	2011 November	2011 December	2012 January	2012 February	2012 March	2012 April	2012 May	2012 June	FY '12 Average
Allegany	239	253	261	268	234	231	250	196	262	227	245	274	245
Anne Arundel	1,018	1,189	1,093	1,079	1,041	964	1,084	1,132	1,202	1,067	1,139	1,084	1,091
Baltimore Co.	1,921	2,181	2,006	2,004	2,108	1,939	1,974	1,919	2,064	1,813	1,979	2,019	1,994
Calvert	246	246	253	220	194	164	221	211	211	186	187	187	211
Caroline	151	173	123	152	147	166	160	123	182	129	188	143	153
Carroll	294	287	268	261	261	261	279	254	248	258	235	339	270
Cecil	371	430	361	392	354	323	350	379	340	332	351	316	358
Charles	357	427	341	361	362	325	370	293	385	326	389	444	365
Dorchester	165	182	159	164	152	162	150	188	154	112	148	148	157
Frederick	445	545	465	422	433	429	433	514	452	433	468	442	457
Garrett	99	93	92	82	74	88	105	86	83	119	106	93	93
Harford	496	553	526	519	480	464	567	497	553	468	523	543	516
Howard	485	501	478	437	406	367	470	516	531	450	474	453	464
Kent	73	73	41	53	73	59	54	69	54	53	59	64	60
Montgomery	2,205	2,578	2,634	2,310	2,334	2,173	2,295	2,408	2,445	2,236	2,446	2,391	2,371
Prince George's	3,179	3,163	3,150	2,626	2,532	2,763	3,056	3,133	3,255	2,987	3,046	3,032	2,994
Queen Anne's	110	143	120	114	99	100	127	114	94	89	128	119	113
St. Mary's	259	330	263	260	222	221	271	253	261	249	216	281	257
Somerset	119	124	119	79	94	91	121	101	84	100	116	139	107
Talbot	106	106	87	75	107	120	114	87	94	80	95	107	98
Washington	454	554	509	473	429	461	509	465	496	430	460	399	470
Wicomico	404	525	398	377	384	366	419	366	399	413	406	420	406
Worcester	169	201	211	176	162	155	187	202	172	165	158	197	180
Baltimore City	4,042	4,396	4,098	3,980	3,583	3,383	3,844	3,737	4,228	3,661	3,860	3,841	3,888
State Totals	17,407	19,253	18,056	16,884	16,265	15,775	17,410	17,243	18,249	16,383	17,422	17,475	17,319

Medical Assistance: Applications Received and Applications Approved

MA- Long Term Care

Applications Received	2011 July	2011 August	2011 September	2011 October	2011 November	2011 December	2012 January	2012 February	2012 March	2012 April	2012 May	2012 June	FY '12 Average
Regional Office	272	421	353	337	248	195	331	275	354	276	293	425	315
Allegany	21	20	21	24	17	23	19	33	30	29	18	26	23
Anne Arundel	0	1	7	1	0	0	5	3	2	3	1	1	10
Baltimore Co.	1	1	2	1	3	1	3	2	4	4	1	1	6
Calvert	3	11	9	5	9	4	13	9	8	13	21	18	17
Caroline	7	2	8	7	4	5	8	6	9	6	0	10	12
Carroll	14	10	7	16	13	17	25	22	22	22	20	19	7
Cecil	18	12	16	10	8	2	13	16	17	16	12	5	11
Charles	6	7	4	9	12	2	7	0	3	8	12	15	16
Dorchester	7	11	15	7	11	10	10	12	17	10	8	8	11
Frederick	11	19	29	26	18	8	7	9	26	4	12	22	16
Garrett	7	13	12	15	8	7	16	8	12	9	10	18	11
Harford	29	31	18	27	21	22	19	29	30	27	34	30	26
Howard	10	12	15	15	11	13	19	18	17	12	8	15	14
Kent	4	5	3	4	3	0	4	1	3	1	0	3	3
Montgomery	96	97	105	111	82	73	91	78	103	87	92	78	91
Prince George's	2	1	4	2	2	1	6	6	18	5	2	5	5
Queen Anne's	10	9	6	3	8	2	9	10	8	6	3	3	6
St. Mary's	10	12	11	8	1	8	2	10	4	8	5	9	7
Somerset	9	13	8	3	11	8	9	5	16	7	10	7	9
Talbot	3	9	3	9	10	3	10	14	7	9	7	7	8
Washington	35	36	32	29	21	32	44	54	32	28	36	29	34
Wicomico	13	17	13	14	18	5	27	21	21	16	15	14	16
Worcester	14	10	6	14	20	4	6	8	11	14	12	17	11
Baltimore City	7	9	4	8	12	11	12	17	11	17	11	8	11
State Totals	609	789	711	705	571	456	715	666	785	637	643	793	673

Note: MA-LTC processing was regionalized for Baltimore City and Anne Arundel, Baltimore and Prince George's counties beginning in October 2009.

Medical Assistance: Applications Received and Applications Approved

MA- Long Term Care

Applications Approved	2011 July	2011 August	2011 September	2011 October	2011 November	2011 December	2012 January	2012 February	2012 March	2012 April	2012 May	2012 June	FY '12 Average
Regional Office	460	547	480	459	512	523	509	500	535	544	552	517	512
Allegany	32	39	24	38	22	16	28	25	33	25	43	22	29
Anne Arundel	0	1	2	2	0	0	2	1	1	3	0	1	1
Baltimore Co.	9	7	5	12	7	7	6	10	14	10	9	4	7
Calvert	11	5	8	2	6	9	9	4	8	12	16	5	8
Caroline	7	2	3	4	1	3	3	0	5	5	7	7	4
Carroll	19	20	27	16	12	14	17	17	36	15	28	19	20
Cecil	23	24	24	11	4	4	14	18	24	19	11	6	15
Charles	20	8	16	15	11	16	28	9	21	12	23	19	17
Dorchester	7	6	11	11	5	3	10	15	9	8	9	15	9
Frederick	16	26	28	22	28	19	33	30	28	24	40	30	27
Garrett	7	11	10	9	7	9	12	15	13	8	8	11	10
Harford	16	24	16	21	28	26	19	24	24	19	21	32	23
Howard	19	13	15	9	13	9	11	21	16	8	17	8	13
Kent	7	2	8	5	1	1	4	2	6	2	4	5	4
Montgomery	83	77	91	87	101	77	77	65	77	89	67	95	82
Prince George's	2	3	1	1	6	3	3	3	7	2	6	4	3
Queen Anne's	6	7	9	3	3	2	4	3	2	4	10	5	5
St. Mary's	6	14	5	10	15	13	3	14	10	8	7	14	10
Somerset	6	6	11	7	3	3	13	7	7	6	5	4	7
Talbot	6	6	6	1	6	4	9	9	9	5	12	7	7
Washington	17	34	22	26	33	34	37	35	37	30	28	38	31
Wicomico	22	24	16	15	18	16	18	22	24	14	19	14	19
Worcester	12	18	12	7	14	24	18	9	10	14	3	11	13
Baltimore City	3	5	10	8	5	8	11	5	6	10	8	11	8
State Totals	816	929	860	801	861	843	898	863	962	896	953	904	882

Note: MA-LTC processing was regionalized for Baltimore City and Anne Arundel, Baltimore and Prince George's counties beginning in October 2009.

Medical Assistance: Applications Received and Applications Approved

MA- SSI

Applications Received	2011	2011	2011	2011	2011	2011	2012	2012	2012	2012	2012	2012	FY '12 Average
	July	August	September	October	November	December	January	February	March	April	May	June	
Allegany	23	27	31	21	18	19	12	25	30	22	32	30	24
Anne Arundel	41	39	34	37	24	26	38	30	29	32	35	27	33
Baltimore Co.	30	27	28	45	44	18	25	25	22	21	24	24	28
Calvert	15	10	11	11	5	2	3	11	7	4	12	8	8
Caroline	10	3	6	5	5	4	8	4	3	10	6	9	6
Carroll	13	12	11	15	9	21	7	18	16	15	6	13	13
Cecil	35	20	25	37	28	16	28	27	28	27	20	13	25
Charles	10	21	8	8	8	14	11	5	10	11	8	11	10
Dorchester	9	10	12	10	13	10	6	12	7	8	10	12	10
Frederick	34	14	29	22	12	16	11	44	18	12	15	15	20
Garrett	5	5	6	3	8	1	5	5	8	3	6	6	5
Harford	22	15	13	14	13	12	16	7	28	16	18	22	16
Howard	30	26	24	10	18	24	22	20	31	15	11	27	22
Kent	5	5	3	3	4	2	1	3	2	1	3	2	3
Montgomery	91	95	80	80	60	65	71	89	99	83	82	107	84
Prince George's	104	120	91	105	65	48	61	68	106	76	76	80	83
Queen Anne's	11	10	9	8	5	6	7	7	3	2	10	5	7
St. Mary's	10	10	8	6	7	7	9	20	9	16	11	13	11
Somerset	10	4	3	4	3	5	7	4	1	8	7	11	6
Talbot	9	4	8	6	4	17	7	6	8	4	5	15	8
Washington	17	20	17	11	15	23	14	20	16	17	18	12	17
Wicomico	26	24	10	16	17	14	26	21	16	28	23	27	21
Worcester	6	13	9	5	4	5	4	14	6	3	4	7	7
Baltimore City	353	393	414	388	361	247	369	382	407	303	348	378	362
State Totals	919	927	890	870	750	622	768	867	910	737	790	874	827

Medical Assistance: Applications Received and Applications Approved

MA- SSI

Applications Approved	2011 July	2011 August	2011 September	2011 October	2011 November	2011 December	2012 January	2012 February	2012 March	2012 April	2012 May	2012 June	FY '12 Average
Allegany	37	38	31	32	29	28	26	29	41	28	10	33	30
Anne Arundel	84	88	71	74	63	62	63	58	84	61	16	65	66
Baltimore Co.	100	174	167	234	146	86	88	151	210	95	28	83	130
Calvert	29	16	15	14	9	7	5	16	10	9	3	13	12
Caroline	25	11	6	14	19	10	18	10	15	17	0	11	13
Carroll	33	33	22	28	18	30	18	31	24	23	6	27	24
Cecil	48	41	42	48	35	24	36	44	42	36	10	23	36
Charles	27	46	10	20	22	22	25	21	25	25	5	27	23
Dorchester	19	22	18	24	21	20	15	17	18	20	3	25	19
Frederick	47	29	39	29	22	30	12	67	39	18	11	16	30
Garrett	8	10	11	6	14	10	6	11	11	11	2	9	9
Harford	67	73	35	34	37	29	39	40	116	54	12	45	48
Howard	84	65	27	17	23	24	32	37	44	20	9	27	34
Kent	8	7	7	8	5	4	1	12	6	5	2	11	6
Montgomery	133	156	109	108	118	88	97	124	145	120	47	148	116
Prince George's	595	237	156	159	117	87	86	127	196	206	30	151	179
Queen Anne's	11	14	7	9	6	8	11	11	4	4	7	8	8
St. Mary's	27	29	19	16	19	22	19	32	15	18	10	21	21
Somerset	17	15	12	6	5	14	11	12	7	9	4	13	10
Talbot	13	13	9	8	9	20	10	11	14	10	2	15	11
Washington	36	68	43	35	49	57	38	56	57	52	8	45	45
Wicomico	47	85	23	27	32	33	41	34	38	47	19	44	39
Worcester	19	29	18	9	6	10	16	19	17	17	2	23	15
Baltimore City	603	642	631	590	513	413	625	634	637	511	311	599	559
State Totals	2,117	1,941	1,528	1,549	1,337	1,138	1,338	1,604	1,815	1,416	557	1,482	1,485

Medical Assistance: Applications Received and Applications Approved

MA- MCHP

Applications Received	2011	2011	2011	2011	2011	2011	2012	2012	2012	2012	2012	2012	FY '12 Average
	July	August	September	October	November	December	January	February	March	April	May	June	
Allegany	41	55	76	56	59	53	46	61	69	52	83	82	61
Anne Arundel	337	465	436	465	361	355	405	385	453	441	496	421	418
Baltimore Co.	594	703	586	658	775	626	616	521	575	513	702	720	632
Calvert	80	82	85	66	88	63	107	68	90	80	72	90	81
Caroline	30	48	43	49	42	47	36	48	33	36	52	24	41
Carroll	75	52	82	82	83	68	85	80	68	38	62	84	72
Cecil	95	127	118	94	125	115	97	113	93	119	103	109	109
Charles	152	165	176	131	131	154	175	145	164	145	150	156	154
Dorchester	41	45	29	30	39	51	36	29	33	25	53	30	37
Frederick	176	211	145	124	156	163	155	166	226	152	165	170	167
Garrett	22	18	30	15	20	20	31	18	24	25	18	24	22
Harford	144	186	158	170	150	161	167	145	167	158	167	189	164
Howard	138	166	170	172	163	100	151	153	203	157	151	146	156
Kent	21	9	12	26	21	14	15	15	16	10	12	15	16
Montgomery	542	654	626	681	627	581	586	645	673	610	643	555	619
Prince George's	820	918	820	781	724	804	807	970	963	916	958	905	866
Queen Anne's	19	43	22	29	23	31	34	36	20	32	45	49	32
St. Mary's	46	84	57	73	56	64	82	60	71	66	50	75	65
Somerset	24	29	28	35	31	22	41	16	35	18	18	41	28
Talbot	26	23	38	34	32	31	29	27	24	13	28	20	27
Washington	115	228	199	173	143	147	159	148	167	151	188	157	165
Wicomico	102	113	131	94	103	134	121	112	105	105	91	146	113
Worcester	48	39	48	62	46	32	55	48	58	44	59	49	49
Baltimore City	645	738	612	682	705	666	677	726	796	658	692	723	693
State Totals	4,333	5,201	4,727	4,782	4,703	4,502	4,713	4,735	5,126	4,564	5,058	4,980	4,785

Medical Assistance: Cases Under Care

MA- Community Care

MA-CC Cases	2011 July	2011 August	2011 September	2011 October	2011 November	2011 December	2012 January	2012 February	2012 March	2012 April	2012 May	2012 June	FY '12 Average
Allegany	4,404	4,393	4,543	4,415	4,534	4,405	4,463	4,581	4,468	4,576	4,396	4,540	4,477
Anne Arundel	18,325	18,442	19,103	18,413	19,091	18,426	18,412	19,174	18,743	19,446	19,026	19,683	18,857
Baltimore Co.	36,719	36,859	38,125	36,819	38,143	37,103	37,385	38,661	37,615	38,860	37,840	39,278	37,784
Calvert	3,286	3,235	3,382	3,259	3,377	3,215	3,247	3,342	3,264	3,368	3,259	3,356	3,299
Caroline	2,623	2,624	2,691	2,593	2,679	2,616	2,623	2,688	2,620	2,725	2,656	2,764	2,659
Carroll	4,658	4,665	4,834	4,685	4,867	4,685	4,676	4,831	4,703	4,865	4,723	4,937	4,761
Cecil	5,315	5,347	5,573	5,333	5,531	5,378	5,364	5,585	5,399	5,541	5,359	5,545	5,439
Charles	6,267	6,177	6,374	6,142	6,397	6,146	6,198	6,422	6,234	6,453	6,266	6,596	6,306
Dorchester	2,672	2,646	2,789	2,662	2,759	2,688	2,679	2,802	2,736	2,793	2,714	2,810	2,729
Frederick	8,284	8,283	8,519	8,278	8,557	8,319	8,394	8,672	8,381	8,660	8,434	8,692	8,456
Garrett	1,761	1,755	1,796	1,727	1,757	1,724	1,747	1,804	1,750	1,830	1,784	1,843	1,773
Harford	8,042	8,068	8,442	8,225	8,536	8,335	8,413	8,705	8,396	8,694	8,457	8,764	8,423
Howard	7,901	7,840	8,153	7,966	8,234	7,915	8,005	8,328	8,153	8,451	8,331	8,674	8,163
Kent	1,133	1,129	1,154	1,093	1,137	1,096	1,105	1,149	1,097	1,136	1,105	1,148	1,124
Montgomery	43,894	44,113	45,868	44,462	45,835	44,683	44,757	46,328	45,306	46,806	45,889	47,437	45,448
Prince George's	52,581	52,568	54,815	53,008	54,837	53,081	53,694	56,018	55,082	57,243	55,968	58,144	54,753
Queen Anne's	2,050	2,038	2,086	2,004	2,062	1,955	1,972	2,043	1,980	2,052	2,000	2,070	2,026
St. Mary's	4,471	4,576	4,713	4,531	4,645	4,476	4,526	4,699	4,584	4,790	4,588	4,764	4,614
Somerset	1,901	1,887	1,941	1,860	1,921	1,858	1,880	1,947	1,896	1,951	1,891	1,979	1,909
Talbot	1,902	1,900	1,972	1,887	1,960	1,913	1,926	1,975	1,920	1,968	1,941	2,008	1,939
Washington	8,282	8,278	8,601	8,337	8,541	8,284	8,310	8,607	8,456	8,715	8,485	8,672	8,464
Wicomico	6,713	6,690	6,934	6,702	6,951	6,710	6,763	7,006	6,854	7,117	6,923	7,210	6,881
Worcester	3,013	2,984	3,141	2,992	3,078	3,004	2,994	3,136	3,072	3,174	3,053	3,128	3,064
Baltimore City	63,757	63,941	66,063	63,837	65,681	63,547	63,651	65,603	63,846	65,706	64,047	65,611	64,608
State Totals	299,954	300,438	311,612	301,230	311,110	301,562	303,184	314,106	306,555	316,920	309,135	319,653	307,955

Medical Assistance: Cases Under Care

MA- Long Term Care

MA-LTC Cases	2011 July	2011 August	2011 September	2011 October	2011 November	2011 December	2012 January	2012 February	2012 March	2012 April	2012 May	2012 June	FY '12 Average
Regional Office	8,303	8,437	8,662	8,516	8,684	8,588	8,584	8,550	8,385	8,513	8,431	8,669	8,527
Allegany	656	662	656	663	665	650	648	647	641	632	653	650	652
Anne Arundel	9	9	10	9	8	8	11	12	9	9	8	11	9
Baltimore Co.	84	80	84	87	88	82	87	84	92	98	96	91	87
Calvert	194	187	188	180	177	174	176	174	171	172	176	174	179
Caroline	127	125	126	128	123	121	120	115	111	113	109	115	119
Carroll	420	418	429	425	426	412	401	405	415	416	414	423	417
Cecil	253	253	265	265	264	244	238	243	245	256	249	248	252
Charles	277	279	280	269	274	271	282	282	288	279	286	299	281
Dorchester	166	166	168	168	167	163	163	170	169	176	178	175	169
Frederick	502	495	506	506	520	502	506	512	496	511	514	525	508
Garrett	227	230	237	238	228	227	233	238	243	246	247	243	236
Harford	489	487	487	476	490	488	488	490	478	487	485	500	487
Howard	310	311	316	303	310	301	289	296	289	291	293	285	300
Kent	93	89	96	97	96	94	93	93	95	94	96	96	94
Montgomery	1,998	2,017	1,997	1,971	2,028	2,026	1,986	1,983	1,963	1,996	1,964	2,003	1,994
Prince George's	45	42	39	38	40	35	35	36	39	41	39	39	39
Queen Anne's	94	94	99	99	94	90	87	88	83	84	90	92	91
St. Mary's	252	255	252	249	258	257	251	252	245	248	244	248	251
Somerset	138	134	134	131	131	126	135	137	136	137	134	134	134
Talbot	110	116	108	106	110	99	110	111	115	122	124	125	113
Washington	599	584	597	594	611	592	583	597	607	620	606	633	602
Wicomico	485	493	495	479	473	468	465	471	468	467	455	460	473
Worcester	185	188	188	184	187	194	204	204	198	202	194	199	194
Baltimore City	26	31	44	41	40	37	35	38	36	43	45	54	39
State Totals	16,042	16,182	16,463	16,222	16,492	16,249	16,210	16,228	16,017	16,253	16,130	16,491	16,248

Note: MA-LTC processing was regionalized for Baltimore City and Anne Arundel, Baltimore and Prince George's counties beginning in October 2009.

Medical Assistance: Cases Under Care

MA- SSI

MA-SSI Cases	2011 July	2011 August	2011 September	2011 October	2011 November	2011 December	2012 January	2012 February	2012 March	2012 April	2012 May	2012 June	FY '12 Average
Allegany	2,338	2,351	2,364	2,363	2,376	2,374	2,369	2,373	2,347	2,356	2,351	2,381	2,362
Anne Arundel	5,099	5,126	5,168	5,180	5,215	5,198	5,222	5,247	5,257	5,280	5,298	5,326	5,218
Baltimore Co.	14,055	14,139	14,257	14,406	14,487	14,434	14,396	14,427	14,510	14,540	14,355	14,377	14,365
Calvert	790	801	815	816	815	812	811	818	810	816	811	819	811
Caroline	781	787	780	771	783	780	788	788	789	787	774	774	782
Carroll	1,221	1,236	1,243	1,248	1,256	1,271	1,272	1,289	1,285	1,297	1,292	1,299	1,267
Cecil	1,699	1,696	1,710	1,704	1,719	1,725	1,745	1,755	1,744	1,760	1,754	1,769	1,732
Charles	1,771	1,812	1,812	1,815	1,828	1,839	1,850	1,872	1,869	1,883	1,883	1,901	1,845
Dorchester	1,192	1,196	1,202	1,212	1,222	1,231	1,233	1,242	1,244	1,248	1,244	1,263	1,227
Frederick	2,081	2,095	2,126	2,130	2,139	2,143	2,135	2,183	2,188	2,169	2,147	2,146	2,140
Garrett	699	698	694	679	685	688	685	691	690	693	688	684	690
Harford	2,901	2,943	2,927	2,901	2,907	2,879	2,887	2,913	2,970	3,019	3,012	3,033	2,941
Howard	2,306	2,374	2,399	2,398	2,410	2,406	2,437	2,470	2,496	2,519	2,523	2,551	2,441
Kent	320	325	334	327	332	338	337	342	337	336	330	337	333
Montgomery	12,983	13,060	13,111	13,127	13,196	13,179	13,226	13,304	13,365	13,435	13,445	13,511	13,245
Prince George's	12,262	12,457	12,570	12,582	12,650	12,639	12,649	12,730	12,808	12,977	12,970	13,063	12,696
Queen Anne's	385	391	398	401	402	407	413	418	420	422	409	416	407
St. Mary's	1,357	1,373	1,384	1,381	1,390	1,393	1,397	1,408	1,408	1,426	1,427	1,441	1,399
Somerset	735	739	748	742	751	753	754	767	756	758	763	771	753
Talbot	558	555	556	556	560	566	566	565	555	565	570	578	563
Washington	3,150	3,182	3,217	3,221	3,263	3,262	3,271	3,300	3,290	3,312	3,306	3,318	3,258
Wicomico	2,267	2,333	2,345	2,327	2,322	2,331	2,355	2,374	2,378	2,416	2,409	2,355	2,351
Worcester	726	729	742	740	733	731	732	734	737	745	735	757	737
Baltimore City	43,579	43,633	43,952	43,988	44,112	43,817	43,726	43,976	43,977	44,125	44,141	44,416	43,954
State Totals	115,255	116,031	116,854	117,015	117,553	117,196	117,256	117,986	118,230	118,884	118,637	119,286	117,515

Medical Assistance: Cases Under Care

MA- MCHP

Assistance Units	2011 July	2011 August	2011 September	2011 October	2011 November	2011 December	2012 January	2012 February	2012 March	2012 April	2012 May	2012 June	FY '12 Average
Allegany	591	610	564	564	570	555	531	511	524	508	522	536	549
Anne Arundel	3,763	3,757	3,819	3,895	3,842	3,852	3,895	3,964	4,036	4,000	4,160	4,259	3,937
Baltimore Co.	9,456	9,388	9,458	9,429	9,469	9,471	9,501	9,402	9,326	9,207	9,207	9,313	9,386
Calvert	740	712	689	677	674	672	676	666	678	647	655	665	679
Caroline	511	515	497	499	513	494	479	488	485	486	486	479	494
Carroll	1,044	1,023	1,021	1,028	1,040	1,038	1,017	1,018	1,007	977	934	934	1,007
Cecil	830	825	821	817	800	819	818	790	777	757	752	751	796
Charles	1,694	1,713	1,724	1,730	1,748	1,747	1,752	1,768	1,808	1,800	1,839	1,801	1,760
Dorchester	611	583	586	561	549	569	579	552	533	515	535	518	558
Frederick	2,331	2,384	2,329	2,308	2,277	2,332	2,370	2,402	2,427	2,399	2,407	2,424	2,366
Garrett	155	145	152	171	173	179	176	168	167	179	168	166	167
Harford	1,442	1,501	1,583	1,601	1,613	1,598	1,614	1,579	1,565	1,524	1,538	1,534	1,558
Howard	2,010	1,984	1,940	1,982	2,005	1,950	1,951	1,990	2,007	1,979	2,013	2,062	1,989
Kent	169	164	164	155	158	148	158	157	167	158	156	152	159
Montgomery	13,309	13,349	13,364	13,409	13,463	13,523	13,606	13,649	13,744	13,669	13,716	13,756	13,546
Prince George's	15,095	14,778	14,731	14,574	14,565	14,340	14,112	14,058	14,235	14,156	14,283	14,362	14,441
Queen Anne's	257	266	260	255	251	245	238	242	229	221	212	219	241
St. Mary's	836	800	810	805	777	765	764	759	743	743	707	706	768
Somerset	371	370	379	377	378	368	371	362	371	371	358	355	369
Talbot	441	437	439	438	448	465	463	446	445	433	428	403	441
Washington	1,656	1,655	1,652	1,641	1,608	1,624	1,586	1,590	1,555	1,510	1,550	1,572	1,600
Wicomico	1,339	1,331	1,329	1,315	1,328	1,330	1,344	1,313	1,300	1,306	1,275	1,277	1,316
Worcester	649	621	618	637	625	633	639	646	638	643	656	647	638
Baltimore City	12,231	12,211	12,120	11,957	11,900	11,860	11,679	11,535	11,443	11,308	11,128	10,957	11,694
State Totals	71,531	71,122	71,049	70,825	70,774	70,577	70,319	70,055	70,210	69,496	69,685		70,513

Public Assistance to Adults: Applications Received, Applications Approved and Cases Closed

Applications Received	2011 July	2010 August	2010 September	2010 October	2010 November	2010 December	2012 January	2012 February	2012 March	2012 April	2012 May	2012 June	FY '12 Average
Allegany	1	1	3	2	0	4	1	0	0	3	0	2	1
Anne Arundel	5	3	3	6	9	3	4	2	10	10	9	9	6
Baltimore Co.	13	11	1	7	6	3	4	5	9	5	5	8	6
Calvert	1	0	2	0	0	1	0	2	0	0	0	1	1
Caroline	1	0	1	0	1	1	0	2	0	0	0	0	1
Carroll	0	4	3	1	1	1	3	1	0	0	2	2	2
Cecil	0	0	0	0	1	1	0	0	1	2	0	0	0
Charles	1	5	1	2	1	0	0	2	2	0	1	0	1
Dorchester	2	0	0	1	0	0	1	0	1	0	1	2	1
Frederick	0	2	4	2	1	1	7	1	4	0	2	2	2
Garrett	0	0	1	0	0	0	0	2	0	0	0	0	0
Harford	2	2	3	2	3	2	6	3	4	3	4	3	3
Howard	2	1	0	0	0	5	2	4	1	3	0	1	2
Kent	1	2	1	1	0	0	0	2	0	0	2	0	1
Montgomery	4	7	6	5	9	10	5	5	8	9	6	9	7
Prince George's	10	14	6	2	3	15	8	23	4	5	10	7	9
Queen Anne's	0	5	1	1	2	2	2	5	1	2	2	1	2
St. Mary's	1	0	5	1	2	1	1	0	1	4	3	4	2
Somerset	0	0	0	0	0	0	0	0	1	1	0	0	0
Talbot	0	0	0	0	0	0	0	1	0	1	0	0	0
Washington	0	3	1	0	0	3	4	1	2	1	2	1	2
Wicomico	0	4	5	3	4	4	3	6	5	2	3	2	3
Worcester	1	1	1	1	0	1	0	1	0	1	0	0	1
Baltimore City	18	41	49	44	37	63	39	41	56	46	59	62	46
State Totals	63	106	97	81	80	121	90	109	110	98	111	116	99

Public Assistance to Adults: Applications Received, Applications Approved and Cases Closed

Applications Approved	2011 July	2010 August	2010 September	2010 October	2010 November	2010 December	2012 January	2012 February	2012 March	2012 April	2012 May	2012 June	FY '12 Average
Allegany	3	1	2	3	0	1	2	2	0	3	0	2	2
Anne Arundel	4	8	4	5	14	7	7	3	10	11	7	9	7
Baltimore Co.	21	18	12	11	9	7	9	7	13	3	7	9	11
Calvert	1	0	1	0	0	1	0	1	1	0	0	1	1
Caroline	0	0	0	1	0	0	2	0	2	0	0	0	0
Carroll	0	2	2	2	0	1	2	2	0	0	2	1	1
Cecil	0	0	0	0	1	1	1	0	0	3	0	0	1
Charles	1	3	4	2	2	0	2	2	1	1	1	0	2
Dorchester	3	0	0	0	1	0	3	0	1	1	0	2	1
Frederick	1	4	4	3	1	1	13	3	4	2	7	4	4
Garrett	0	0	0	1	0	0	0	1	1	0	0	0	0
Harford	5	2	3	3	3	2	7	3	3	4	2	6	4
Howard	3	2	2	0	1	3	6	4	1	2	1	0	2
Kent	2	2	0	2	0	0	0	3	0	0	2	1	1
Montgomery	6	7	9	5	11	10	9	4	9	10	4	12	8
Prince George's	12	16	9	6	4	14	9	27	8	5	11	8	11
Queen Anne's	0	1	3	0	0	2	0	5	0	2	0	1	1
St. Mary's	2	0	2	4	2	1	1	1	1	4	3	2	2
Somerset	0	0	0	0	0	0	0	0	1	1	0	0	0
Talbot	0	0	0	0	0	0	0	0	1	1	0	0	0
Washington	1	3	0	1	0	2	3	2	2	1	2	1	2
Wicomico	1	5	5	3	4	6	3	5	7	3	4	2	4
Worcester	0	1	1	1	0	0	1	1	0	1	0	0	1
Baltimore City	25	52	54	37	34	64	47	51	54	51	77	80	52
State Totals	91	127	117	90	87	123	127	127	120	109	130	141	116

Public Assistance to Adults: Applications Received, Applications Approved and Cases Closed

Applications Not Approved	2011 July	2010 August	2010 September	2010 October	2010 November	2010 December	2012 January	2012 February	2012 March	2012 April	2012 May	2012 June	FY '12 Average
Allegany	1	0	0	0	1	2	1	2	1	0	0	0	1
Anne Arundel	0	0	0	2	2	2	3	1	0	1	1	3	1
Baltimore Co.	0	0	0	1	1	0	0	1	0	1	1	1	1
Calvert	0	0	0	1	0	0	0	1	0	0	0	0	0
Caroline	0	1	0	0	0	0	0	0	0	0	0	0	0
Carroll	0	1	0	1	0	0	1	2	0	1	0	1	1
Cecil	0	0	0	0	0	0	0	0	0	1	0	0	0
Charles	0	0	2	0	1	0	0	0	0	0	0	0	0
Dorchester	0	0	0	0	0	0	0	0	0	0	0	0	0
Frederick	1	1	0	0	0	0	0	2	0	0	1	0	0
Garrett	0	0	0	0	0	0	0	0	0	0	0	0	0
Harford	0	0	1	0	0	0	0	1	2	2	0	0	1
Howard	1	0	0	0	0	0	1	0	0	1	1	1	0
Kent	0	0	0	0	0	0	0	1	0	0	1	0	0
Montgomery	0	0	2	1	1	2	1	2	3	1	0	0	1
Prince George's	0	0	2	1	0	1	0	1	0	0	0	1	1
Queen Anne's	0	0	1	1	1	2	0	3	0	1	3	0	1
St. Mary's	0	0	2	1	0	0	1	0	0	3	0	0	1
Somerset	0	0	0	0	0	0	0	0	0	0	0	0	0
Talbot	0	0	0	0	0	0	0	0	0	0	0	0	0
Washington	0	0	0	0	0	0	2	1	2	0	1	0	1
Wicomico	0	2	1	1	0	0	0	1	2	1	0	0	1
Worcester	0	1	1	0	0	0	0	0	0	0	0	0	0
Baltimore City	8	17	11	11	6	11	14	11	8	14	21	17	12
State Totals	11	23	23	21	13	20	24	30	18	27	30	24	22

Public Assistance to Adults: Applications Received, Applications Approved and Cases Closed

Cases Closed	2011	2010	2010	2010	2010	2010	2012	2012	2012	2012	2012	2012	FY '12 Average
	July	August	September	October	November	December	January	February	March	April	May	June	
Allegany	3	2	3	3	1	2	1	1	37	0	4	1	5
Anne Arundel	7	3	8	11	11	6	6	3	274	9	8	7	29
Baltimore Co.	14	12	7	6	11	5	1	10	431	5	11	10	44
Calvert	2	1	1	1	0	1	0	0	30	0	2	0	3
Caroline	0	0	3	1	2	0	0	0	17	0	1	0	2
Carroll	1	3	1	4	1	1	0	3	84	4	1	2	9
Cecil	0	0	0	0	0	4	1	0	34	0	0	0	3
Charles	1	3	1	2	2	3	0	1	40	1	1	0	5
Dorchester	0	1	1	0	2	5	0	1	38	1	0	8	5
Frederick	2	5	4	4	5	3	3	6	226	7	8	7	23
Garrett	0	0	0	1	0	0	1	0	8	2	0	1	1
Harford	1	5	6	3	4	1	10	2	83	3	3	5	11
Howard	4	2	2	0	6	3	13	5	138	3	0	2	15
Kent	1	2	1	0	0	1	0	0	13	1	1	0	2
Montgomery	6	7	6	7	8	12	7	12	390	11	14	8	41
Prince George's	8	14	8	8	12	23	11	24	452	13	20	8	50
Queen Anne's	2	0	6	1	2	1	0	7	17	0	0	2	3
St. Mary's	0	2	1	1	1	1	0	0	51	2	6	1	6
Somerset	0	0	0	0	0	0	0	1	3	1	0	0	0
Talbot	0	0	0	0	0	0	0	0	10	1	0	0	1
Washington	3	2	1	1	4	3	3	1	87	3	0	1	9
Wicomico	3	6	2	4	4	4	7	4	94	7	7	2	12
Worcester	0	1	0	0	0	1	0	0	6	1	0	0	1
Baltimore City	33	36	54	37	45	33	34	45	1,025	39	36	42	122
State Totals	91	107	116	95	121	113	98	126	3,588	114	123	107	400

Public Assistance to Adults: Paid Recipients and Net Expenditures

Total Recipients	2011 July	2011 August	2011 September	2011 October	2011 November	2011 December	2012 January	2012 February	2012 March	2012 April	2012 May	2012 June	FY '12 Average
Allegany	42	42	42	43	40	37	40	41	37	40	40	41	40
Anne Arundel	285	289	305	281	283	302	294	297	279	280	287	279	288
Baltimore Co.	419	430	431	433	429	432	438	436	434	432	426	424	430
Calvert	30	29	29	29	29	29	29	29	31	30	28	29	29
Caroline	17	17	15	16	13	13	18	15	19	16	23	14	16
Carroll	88	89	91	88	86	88	89	90	84	81	83	82	87
Cecil	36	36	36	36	37	35	35	34	34	37	38	37	36
Charles	39	39	45	43	42	39	43	42	40	41	39	40	41
Dorchester	40	38	37	37	39	34	41	37	38	41	40	41	39
Frederick	234	228	226	230	221	218	236	226	226	224	220	218	226
Garrett	9	9	8	9	8	8	7	8	9	7	7	5	8
Harford	94	87	86	88	87	87	86	86	84	85	85	85	87
Howard	134	135	137	135	136	138	142	141	138	136	140	137	137
Kent	15	13	12	14	12	12	12	15	14	12	13	14	13
Montgomery	394	391	396	396	407	394	395	387	390	390	381	385	392
Prince George's	473	473	475	475	463	453	452	457	456	450	435	435	458
Queen Anne's	19	17	20	17	16	17	16	18	17	19	19	20	18
St. Mary's	46	43	44	53	48	48	48	52	51	50	53	54	49
Somerset	5	5	5	5	5	5	5	4	3	4	4	4	5
Talbot	9	9	9	9	9	9	9	9	11	9	9	9	9
Washington	87	91	88	89	85	83	83	89	87	85	86	88	87
Wicomico	91	88	94	90	89	96	89	91	97	89	88	88	91
Worcester	5	5	5	5	5	4	6	5	7	6	6	6	5
Baltimore City	941	951	951	952	945	989	996	1,013	1,024	1,053	1,092	1,118	1,002
State Totals	3,552	3,554	3,587	3,573	3,534	3,570	3,609	3,622	3,610	3,617	3,642	3,653	3,594

Public Assistance to Adults: Paid Recipients and Net Expenditures

Net Expenditures	2011 July	2011 August	2011 September	2011 October	2011 November	2011 December	2012 January	2012 February	2012 March	2012 April	2012 May	2012 June	FY '12 Average
Allegany	10,199	10,197	10,866	10,948	10,628	10,495	10,664	9,340	9,767	10,013	10,013	10,163	\$10,274.3
Anne Arundel	30782	31,658	34,283	30,201	29,511	30,324	31,838	33,013	30,264	29,344	29,602	26,829	\$30,637.4
Baltimore Co.	67,926	70,946	74,212	74,365	75,318	770,441	75,082	73,992	71,864	70,403	67,098	66,200	\$129,820.5
Calvert	8,439	8,284	8,970	8,970	8,970	8,970	8,930	8,929	10,351	9,630	8,222	8,386	\$8,921.1
Caroline	3,910	4,074	3,910	5,394	3,788	3,788	3,689	3,935	4,181	4,017	4,591	3,689	\$4,080.5
Carroll	10,362	10,507	10,671	9,903	9,329	9,903	9,984	9,575	8,161	7,833	7,942	7,887	\$9,338.1
Cecil	2,952	2,952	2,950	2,952	3,034	2,788	2,870	2,788	2,788	3,034	3,116	3,034	\$2,938.2
Charles	14,168	14,440	13,992	13,105	14,875	13,960	14,596	15,103	12,350	14,409	13,456	13,462	\$13,992.9
Dorchester	10,113	9,816	9,734	9,734	10,087	9,724	10,202	9,956	9,868	9,685	6,045	10,545	\$9,625.7
Frederick	40,284	36,948	38,879	40,525	39,021	37,979	39,131	37,979	36,618	36,894	38,347	35,784	\$38,199.2
Garrett	2,450	2,450	1,702	1,767	1,702	1,702	1,606	1,688	1,452	1,283	1,288	1,124	\$1,684.5
Harford	20,097	18,301	18,055	18,463	17,807	17,635	17,565	18,515	19,889	18,383	19,447	18,778	\$18,578.0
Howard	16,714	16,654	16,424	15,312	17,377	16,980	17,439	19,328	16,799	16,375	16,457	15,148	\$16,750.6
Kent	1,147	1,066	984	1,148	984	984	980	1,230	1,148	984	1,056	1,230	\$1,078.4
Montgomery	48,251	49,334	49,762	50,456	50,389	48,580	48,225	46,082	46,615	46,601	45,990	46,417	\$48,058.5
Prince George's	42,989	40,938	41,348	39,945	40,776	38,594	38,960	40,757	38,968	39,139	38,262	38,924	\$39,966.7
Queen Anne's	1,558	1,389	1,640	1,475	1,312	1,394	1,312	1,476	1,144	1,558	1,558	1,476	\$1,440.9
St. Mary's	7,186	6,940	7,559	9,025	8,589	8,615	8,542	9,904	9,904	9,717	9,959	9,960	\$8,825.0
Somerset	410	410	410	410	410	410	410	328	246	328	328	328	\$369.0
Talbot	738	738	738	725	738	738	738	738	902	738	738	738	\$750.6
Washington	37,711	39,104	39,009	38,998	32,434	36,377	36,089	39,778	38,438	37,724	34,715	37,676	\$37,337.8
Wicomico	22,310	22,105	22,291	21,714	21,723	21,707	21,888	21,877	22,895	22,234	22,373	21,884	\$22,083.3
Worcester	762	762	762	762	762	680	832	750	3,439	1,992	1,992	1,992	\$1,290.6
Baltimore City	319,346	313,599	316,437	324,193	333,254	347,515	363,838	362,033	385,688	405,182	416,178	457,279	\$362,045.2
State Totals	\$720,804	\$713,613	\$725,588	\$730,490	\$732,816	\$1,440,282	\$765,409	\$769,094	\$783,740	\$797,500	\$798,773	\$838,934	\$818,087.0

Emergency Assistance to Families with Children: Grants Approved and Net Expenditures

Total Grants	2011 July	2011 August	2011 September	2011 October	2011 November	2011 December	2012 January	2012 February	2012 March	2012 April	2012 May	2012 June	FY '12 Average
Allegany	100	93	92	117	127	110	97	47	40	81	110	2	85
Anne Arundel	58	39	24	28	40	41	49	29	20	24	22	31	34
Baltimore Co.	358	366	318	384	316	305	220	208	140	129	237	151	261
Calvert	6	17	10	10	7	13	16	8	9	10	10	3	10
Caroline	8	8	11	8	14	20	19	13	5	2	13	1	10
Carroll	10	15	8	14	9	19	9	5	0	0	0	0	7
Cecil	4	9	11	9	23	37	32	8	13	13	19	36	18
Charles	5	5	3	3	0	2	0	2	1	0	2	0	2
Dorchester	2	12	3	7	10	9	9	3	7	7	8	0	6
Frederick	1	0	5	37	51	35	62	14	60	44	24	37	31
Garrett	4	5	10	17	28	21	9	1	9	4	3	6	10
Harford	2	8	27	43	19	36	35	27	19	43	44	54	30
Howard	18	4	7	14	15	7	8	6	10	6	13	9	10
Kent	2	3	0	2	2	0	0	1	0	6	12	8	3
Montgomery	190	211	193	198	168	193	156	147	79	55	98	77	147
Prince George's	104	133	132	126	85	77	72	33	23	25	34	26	73
Queen Anne's	1	0	1	2	4	1	2	1	0	4	10	0	2
St. Mary's	52	41	73	50	91	72	59	71	17	26	34	61	54
Somerset	7	15	10	0	0	0	0	0	0	3	0	0	3
Talbot	5	4	12	8	12	9	3	2	3	2	0	1	5
Washington	47	104	75	64	48	32	29	32	10	13	36	3	41
Wicomico	19	18	25	20	25	16	27	25	13	28	28	23	22
Worcester	2	0	8	8	8	1	0	0	0	0	1	1	2
Baltimore City	643	678	613	648	606	515	417	188	182	196	276	256	435
State Totals	1,648	1,788	1,671	1,817	1,708	1,571	1,330	871	660	721	1,034	786	1,300

Emergency Assistance to Families with Children: Grants Approved and Net Expenditures

Net Expenditures	2011 July	2011 August	2011 September	2011 October	2011 November	2011 December	2012 January	2012 February	2012 March	2012 April	2012 May	2012 June	FY '12 Average
Allegany	26,330	25,700	25,119	31,327	34,698	31,702	25,968	12,456	10,308	21,850	29,500	4,750	\$23,309.0
Anne Arundel	36,315	25,539	13,608	13,884	24,347	19,950	25,725	16,534	10,851	12,134	11,005	23,329	\$19,435.1
Baltimore Co.	102,362	106,913	91,035	111,515	90,671	88,188	64,577	61,108	54,834	60,428	112,143	128,179	\$89,329.4
Calvert	3,310	4,316	3,170	2,996	2,244	3,945	5,615	2,242	2,550	3,027	2,582	1,245	\$3,103.5
Caroline	2,599	2,973	4,143	2,273	2,952	4,401	4,346	2,588	968	471	2,700	1,839	\$2,687.7
Carroll	2,141	3,185	1,667	2,947	2,000	3,825	1,920	1,100	0	0	0	0	\$1,565.4
Cecil	794	1,800	1,800	1,704	4,548	11,328	11,432	2,700	4,764	4,368	6,946	14,392	\$5,548.1
Charles	1,187	1,185	750	650	0	400	0	400	200	0	400	0	\$430.9
Dorchester	687	3,737	868	2,014	3,339	2,766	2,333	1,050	1,981	2,081	2,387	0	\$1,936.9
Frederick	200	0	754	6,463	8,749	6,104	10,278	-100	11,021	7,988	4,434	7,026	\$5,243.1
Garrett	1,122	1,596	3,218	5,794	9,819	7,456	2,413	400	2,669	1,375	567	2,282	\$3,225.7
Harford	800	4,000	13,161	20,874	9,097	17,143	16,506	13,392	9,500	21,030	22,000	36,809	\$15,359.2
Howard	10,602	2,204	4,082	8,174	8,730	3,738	4,719	3,563	5,471	3,100	6,600	4,332	\$5,442.9
Kent	732	800	0	496	550	0	0	250	0	1,322	2,383	4,145	\$889.8
Montgomery	103,646	116,337	100,374	106,655	91,157	102,504	86,343	80,301	42,920	30,275	52,550	50,525	\$80,298.8
Prince George's	103,947	120,154	117,562	107,622	63,340	58,259	50,177	24,979	17,331	19,758	24,811	29,739	\$61,473.1
Queen Anne's	132	0	150	300	580	150	300	150	0	1,200	2,958	410	\$527.5
St. Mary's	43,217	43,933	73,996	41,718	88,213	66,586	52,998	82,278	8,303	19,636	27,238	85,569	\$52,807.1
Somerset	3,225	6,372	3,457	0	0	0	0	0	0	650	0	0	\$1,142.0
Talbot	1,580	1,430	3,774	2,551	4,271	1,793	628	500	599	550	0	129	\$1,483.7
Washington	6,541	13,846	10,327	8,972	6,690	4,314	3,970	4,420	1,539	2,527	9,192	3,380	\$6,309.8
Wicomico	8,102	8,115	11,478	8,859	11,042	7,103	12,075	11,267	5,902	10,803	12,231	12,631	\$9,967.3
Worcester	377	0	2,093	2,376	2,910	500	0	0	0	0	200	77	\$711.1
Baltimore City	346,687	369,150	316,093	345,195	333,120	283,247	234,535	80,097	82,302	108,845	156,792	171,577	\$235,636.6
State Totals	\$806,634	\$863,283	\$802,677	\$835,357	\$803,068	\$725,401	616,858	401,673	\$274,012	\$333,419	\$489,618	\$582,364	\$627,863.7

Burial Assistance: Grants Approved and Net Expenditures

Total Grants	2011 July	2010 August	2010 September	2010 October	2010 November	2010 December	2012 January	2012 February	2012 March	2012 April	2012 May	2012 June	FY '12 Average
Allegany	0	0	0	1	2	0	0	0	0	0	2	0	0
Anne Arundel	6	1	2	1	1	0	2	0	1	2	1	0	1
Baltimore Co.	3	1	2	2	1	6	7	8	2	3	2	1	3
Calvert	0	0	0	0	0	0	1	2	1	0	1	0	0
Caroline	1	1	0	1	0	0	0	0	0	0	0	0	0
Carroll	0	0	0	1	1	0	1	0	0	0	0	0	0
Cecil	0	1	0	0	1	1	0	0	0	1	0	0	0
Charles	0	0	0	0	0	0	1	0	0	0	0	0	0
Dorchester	1	1	2	2	1	1	1	2	0	0	0	0	1
Frederick	0	0	0	0	0	0	1	0	0	0	0	0	0
Garrett	0	0	0	0	0	0	0	0	0	0	1	0	0
Harford	0	0	1	3	0	0	1	0	0	1	1	1	1
Howard	1	3	0	0	1	0	0	0	1	1	0	0	1
Kent	0	0	0	0	0	0	0	0	0	0	0	0	0
Montgomery	1	2	1	0	1	2	3	4	4	2	1	1	2
Prince George's	5	6	6	9	0	2	3	2	4	2	3	1	4
Queen Anne's	0	0	0	0	0	0	0	0	0	0	0	0	0
St. Mary's	1	1	0	0	0	2	1	0	0	0	0	1	1
Somerset	1	0	0	0	1	0	0	0	0	0	0	0	0
Talbot	1	0	0	0	0	0	0	0	0	0	0	0	0
Washington	0	2	1	0	0	1	1	3	0	0	2	0	1
Wicomico	1	1	0	1	0	1	0	0	0	1	0	0	0
Worcester	0	1	1	0	0	0	0	0	0	1	0	0	0
Baltimore City	20	30	31	15	20	34	24	31	26	15	33	33	26
State Totals	42	51	47	36	30	50	47	52	39	29	47	38	42

Burial Assistance: Grants Approved and Net Expenditures

Net Expenditures	2011 July	2010 August	2010 September	2010 October	2010 November	2010 December	2012 January	2012 February	2012 March	2012 April	2012 May	2012 June	FY '12 Average
Allegany	0	0	0	650	1,300	0	0	0	0	0	1,290	0	\$270.0
Anne Arundel	3,550	650	1,025	650	650	0	1,300	0	650	1,292	650	0	\$868.1
Baltimore Co.	1,950	650	1,300	1,300	650	3,900	4,542	4,550	1,300	1,300	1,300	650	\$1,949.3
Calvert	0	0	0	0	0	0	650	1,300	0	0	650	0	\$216.7
Caroline	650	650	0	625	0	0	0	0	0	0	0	0	\$160.4
Carroll	0	0	0	650	650	0	600	0	0	0	0	0	\$158.3
Cecil	0	650	0	0	650	650	0	0	0	650	0	0	\$216.7
Charles	0	0	0	0	0	0	649	0	0	0	0	0	\$54.1
Dorchester	650	650	1,300	1,300	650	650	650	1,300	0	0	0	0	\$595.8
Frederick	0	0	0	0	0	0	650	0	0	0	0	0	\$54.2
Garrett	0	0	0	0	0	0	0	0	0	0	650	0	\$54.2
Harford	0	0	650	1,950	0	0	650	0	0	650	650	650	\$433.3
Howard	650	1,950	0	0	650	0	0	0	650	650	0	0	\$379.2
Kent	0	0	0	0	0	0	0	0	0	0	0	0	\$0.0
Montgomery	650	1,300	650	0	650	1,300	1,760	2,600	2,600	1,300	650	650	\$1,175.8
Prince George's	3,250	3,900	3,700	5,850	0	1,300	1,950	1,300	2,600	1,300	1,950	650	\$2,312.5
Queen Anne's	0	0	0	0	0	0	0	0	0	0	0	0	\$0.0
St. Mary's	650	545	0	0	0	1,300	650	0	0	0	0	650	\$316.3
Somerset	650	0	0	0	650	0	0	0	0	0	0	0	\$108.3
Talbot	650	0	0	0	0	0	0	0	0	0	0	0	\$54.2
Washington	0	1,300	504	0	0	650	650	1,950	0	0	1,286	0	\$528.3
Wicomico	650	650	0	650	0	650	0	0	0	650	0	0	\$270.8
Worcester	0	650	650	0	0	0	0	0	0	650	0	0	\$162.5
Baltimore City	10,125	18,475	20,150	9,700	13,000	22,100	15,600	20,150	16,900	9,738	20,150	4,550	\$15,053.2
State Totals	\$24,075	\$32,020	\$29,929	\$23,325	\$19,500	\$32,500	\$30,301	\$33,150	\$24,700	\$18,180	\$29,226	\$7,800	\$25,392.2