

Temporary Cash Assistance: Applications Received, Approved, Not Approved, & Cases Closed

Applications Received	2017	2017	2017	2017	2017	2017	2018	2018	2018	2018	2018	2018	FY '18
	July	August	September	October	November	December	January	February	March	April	May	June	Average
Allegany	64												64
Anne Arundel	315												315
Baltimore Co.	717												717
Calvert	31												31
Caroline	27												27
Carroll	45												45
Cecil	84												84
Charles	116												116
Dorchester	27												27
Frederick	92												92
Garrett	6												6
Harford	142												142
Howard	104												104
Kent	10												10
Montgomery	390												390
Prince George's	673												673
Queen Anne's	14												14
St. Mary's	72												72
Somerset	39												39
Talbot	17												17
Washington	191												191
Wicomico	91												91
Worcester	17												17
Baltimore City	1,665												1,665
State Totals	4,949	0	0	0	0	0	0	0	0	0	0	0	412

Temporary Cash Assistance: Applications Received, Approved, Not Approved, & Cases Closed

Applications Approved	2017 July	2017 August	2017 September	2017 October	2017 November	2017 December	2018 January	2018 February	2018 March	2018 April	2018 May	2018 June	FY '18 Average
Allegany	23												23
Anne Arundel	81												81
Baltimore Co.	215												215
Calvert	7												7
Caroline	4												4
Carroll	7												7
Cecil	31												31
Charles	23												23
Dorchester	15												15
Frederick	33												33
Garrett	4												4
Harford	49												49
Howard	27												27
Kent	3												3
Montgomery	92												92
Prince George's	155												155
Queen Anne's	4												4
St. Mary's	32												32
Somerset	8												8
Talbot	3												3
Washington	52												52
Wicomico	34												34
Worcester	9												9
Baltimore City	782												782
State Totals	1,693	0	0	0	0	0	0	0	0	0	0	0	141

Temporary Cash Assistance: Applications Received, Approved, Not Approved, & Cases Closed

Applications Not Approved	2017 July	2017 August	2017 September	2017 October	2017 November	2017 December	2018 January	2018 February	2018 March	2018 April	2018 May	2018 June	FY '18 Average
Allegany	43												43
Anne Arundel	199												199
Baltimore Co.	642												642
Calvert	26												26
Caroline	14												14
Carroll	50												50
Cecil	64												64
Charles	84												84
Dorchester	26												26
Frederick	78												78
Garrett	5												5
Harford	89												89
Howard	100												100
Kent	13												13
Montgomery	303												303
Prince George's	503												503
Queen Anne's	16												16
St. Mary's	55												55
Somerset	27												27
Talbot	7												7
Washington	124												124
Wicomico	62												62
Worcester	15												15
Baltimore City	1,157												1,157
State Totals	3,702	0	0	0	0	0	0	0	0	0	0	0	309

Temporary Cash Assistance: Applications Received, Approved, Not Approved, & Cases Closed

Cases Closed	2017 July	2017 August	2017 September	2017 October	2017 November	2017 December	2018 January	2018 February	2018 March	2018 April	2018 May	2018 June	FY '18 Average
Allegany	43												43
Anne Arundel	156												156
Baltimore Co.	261												261
Calvert	14												14
Caroline	13												13
Carroll	20												20
Cecil	57												57
Charles	41												41
Dorchester	9												9
Frederick	31												31
Garrett	11												11
Harford	44												44
Howard	31												31
Kent	5												5
Montgomery	132												132
Prince George's	212												212
Queen Anne's	6												6
St. Mary's	40												40
Somerset	19												19
Talbot	9												9
Washington	74												74
Wicomico	61												61
Worcester	10												10
Baltimore City	1,036												1,036
State Totals	2,335	0	0	0	0	0	0	0	0	0	0	0	195

Temporary Cash Assistance: Paid Cases, Paid Recipients (Adults & Children), & Net Expenditures

Paid Cases	2017 July	2017 August	2017 September	2017 October	2017 November	2017 December	2018 January	2018 February	2018 March	2018 April	2018 May	2018 June	FY '18 Average
Allegany	366												366
Anne Arundel	1,250												1,250
Baltimore Co.	2,387												2,387
Calvert	100												100
Caroline	129												129
Carroll	171												171
Cecil	459												459
Charles	318												318
Dorchester	167												167
Frederick	352												352
Garrett	55												55
Harford	495												495
Howard	347												347
Kent	57												57
Montgomery	983												983
Prince George's	1,634												1,634
Queen Anne's	77												77
St. Mary's	443												443
Somerset	159												159
Talbot	69												69
Washington	731												731
Wicomico	476												476
Worcester	95												95
Baltimore City	7,785												7,785
State Totals	19,105												19,105

Temporary Cash Assistance: Paid Cases, Paid Recipients (Adults & Children), & Net Expenditures

Total Paid Recipients	2016 July	2017 August	2017 September	2017 October	2017 November	2017 December	2018 January	2018 February	2018 March	2018 April	2018 May	2018 June	FY '18 Average
Allegany	892												892
Anne Arundel	2,939												2,939
Baltimore Co.	5,885												5,885
Calvert	231												231
Caroline	278												278
Carroll	377												377
Cecil	1,043												1,043
Charles	773												773
Dorchester	372												372
Frederick	844												844
Garrett	128												128
Harford	1,150												1,150
Howard	963												963
Kent	143												143
Montgomery	2,677												2,677
Prince George's	4,234												4,234
Queen Anne's	177												177
St. Mary's	1,186												1,186
Somerset	416												416
Talbot	160												160
Washington	1,745												1,745
Wicomico	1,180												1,180
Worcester	178												178
Baltimore City	20,239												20,239
State Totals*	48,210												48,210

*DHR reports local statistics based on preliminary data. State totals for recipients/expenditures are later revised in bold when final data are available.

Temporary Cash Assistance: Paid Cases, Paid Recipients (Adults & Children), & Net Expenditures

Adult Paid Recipients	2017 July	2017 August	2017 September	2017 October	2017 November	2017 December	2018 January	2018 February	2018 March	2018 April	2018 May	2018 June	FY '18 Average
Allegany	251												251
Anne Arundel	730												730
Baltimore Co.	1,537												1,537
Calvert	55												55
Caroline	37												37
Carroll	74												74
Cecil	245												245
Charles	181												181
Dorchester	75												75
Frederick	216												216
Garrett	28												28
Harford	262												262
Howard	241												241
Kent	37												37
Montgomery	768												768
Prince George's	1,037												1,037
Queen Anne's	53												53
St. Mary's	311												311
Somerset	116												116
Talbot	28												28
Washington	422												422
Wicomico	299												299
Worcester	10												10
Baltimore City	5,742												5,742
State Totals	12,755												12,755

Temporary Cash Assistance: Paid Cases, Paid Recipients (Adults & Children), & Net Expenditures

Child Paid Recipients	2017 July	2017 August	2017 September	2017 October	2017 November	2017 December	2018 January	2018 February	2018 March	2018 April	2018 May	2018 June	FY '18 Average
Allegany	641												641
Anne Arundel	2,209												2,209
Baltimore Co.	4,348												4,348
Calvert	176												176
Caroline	241												241
Carroll	303												303
Cecil	798												798
Charles	592												592
Dorchester	297												297
Frederick	628												628
Garrett	100												100
Harford	888												888
Howard	722												722
Kent	106												106
Montgomery	1,909												1,909
Prince George's	3,197												3,197
Queen Anne's	124												124
St. Mary's	875												875
Somerset	300												300
Talbot	132												132
Washington	1,323												1,323
Wicomico	881												881
Worcester	168												168
Baltimore City	14,497												14,497
State Totals	35,455												35,455

Temporary Cash Assistance: Paid Cases, Paid Recipients (Adults & Children), & Net Expenditures

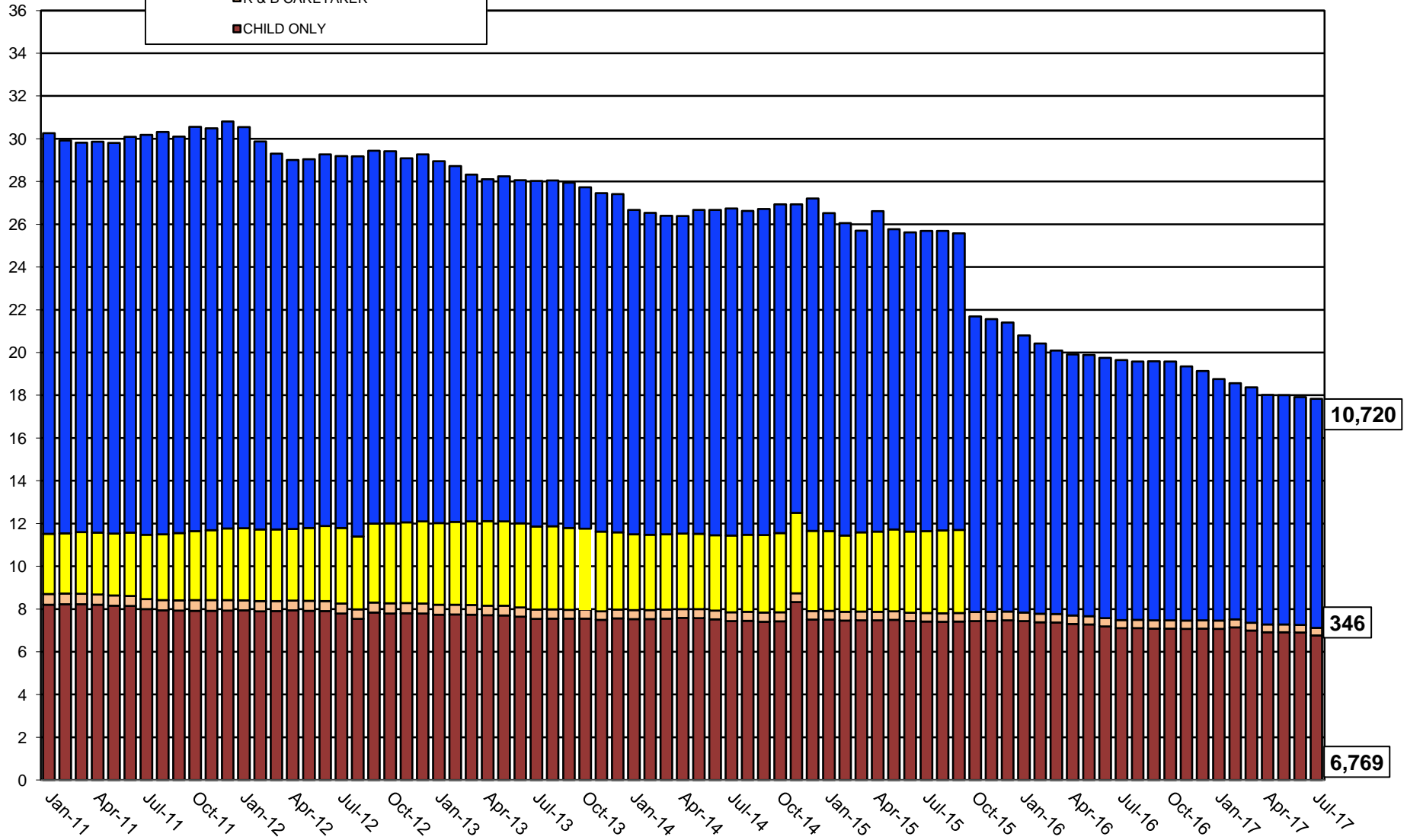
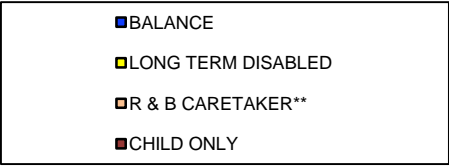
Net Expenditures	2017 July	2017 August	2017 September	2017 October	2017 November	2017 December	2018 January	2018 February	2018 March	2018 April	2018 May	2018 June	FY '18 Average
Allegany	\$183,634.33												\$183,634.33
Anne Arundel	\$581,957.46												\$581,957.46
Baltimore Co.	\$1,151,981.51												\$1,151,981.51
Calvert	\$46,449.47												\$46,449.47
Caroline	\$59,113.35												\$59,113.35
Carroll	\$77,328.36												\$77,328.36
Cecil	\$213,387.98												\$213,387.98
Charles	\$154,752.99												\$154,752.99
Dorchester	\$74,567.25												\$74,567.25
Frederick	\$164,586.62												\$164,586.62
Garrett	\$26,333.00												\$26,333.00
Harford	\$228,809.30												\$228,809.30
Howard	\$174,684.06												\$174,684.06
Kent	\$28,762.30												\$28,762.30
Montgomery	\$507,066.33												\$507,066.33
Prince George's	\$825,409.81												\$825,409.81
Queen Anne's	\$36,162.63												\$36,162.63
St. Mary's	\$218,754.62												\$218,754.62
Somerset	\$76,405.03												\$76,405.03
Talbot	\$29,515.97												\$29,515.97
Washington	\$347,262.21												\$347,262.21
Wicomico	\$230,450.92												\$230,450.92
Worcester	\$42,061.91												\$42,061.91
Baltimore City	\$3,948,086.28												\$3,948,086.28
State Totals	\$9,427,523.69												\$9,427,523.69

*DHS reports local statistics based on preliminary data. State totals for recipients/expenditures are later revised in bold when final data are available.

TCA CASES



TCA CORE CASELOAD



SCALE X 1,000

** Room and Board Schedule Cases with Non-Parent Caretakers

Food Supplement Program: Applications Received, Applications Approved, & Applications Not Approved

Applications Received	2017 July	2017 August	2017 September	2017 October	2017 November	2017 December	2018 January	2018 February	2018 March	2018 April	2018 May	2018 June	FY '18 Average
Allegany	408												408
Anne Arundel	1,759												1,759
Baltimore Co.	4,003												4,003
Calvert	259												259
Caroline	167												167
Carroll	332												332
Cecil	555												555
Charles	667												667
Dorchester	272												272
Frederick	663												663
Garrett	92												92
Harford	897												897
Howard	614												614
Kent	90												90
Montgomery	1,999												1,999
Prince George's	4,149												4,149
Queen Anne's	139												139
St. Mary's	468												468
Somerset	181												181
Talbot	136												136
Washington	857												857
Wicomico	748												748
Worcester	209												209
Baltimore City	8,251												8,251
State Totals	27,915	0	0	0	0	0	0	0	0	0	0	0	2,326

Food Supplement Program: Applications Received, Applications Approved, & Applications Not Approved

Applications Approved	2017 July	2017 August	2017 September	2017 October	2017 November	2017 December	2018 January	2018 February	2018 March	2018 April	2018 May	2018 June	FY '18 Average
Allegany	358												358
Anne Arundel	1,341												1,341
Baltimore Co.	3,121												3,121
Calvert	177												177
Caroline	108												108
Carroll	283												283
Cecil	431												431
Charles	509												509
Dorchester	238												238
Frederick	571												571
Garrett	73												73
Harford	681												681
Howard	463												463
Kent	88												88
Montgomery	1,523												1,523
Prince George's	2,491												2,491
Queen Anne's	122												122
St. Mary's	378												378
Somerset	157												157
Talbot	108												108
Washington	708												708
Wicomico	645												645
Worcester	155												155
Baltimore City	7,675												7,675
State Totals	22,404	0	0	0	0	0	0	0	0	0	0	0	1,867

Food Supplement Program: Applications Received, Applications Approved, & Applications Not Approved

Applications Not Approved	2017 July	2017 August	2017 September	2017 October	2017 November	2017 December	2018 January	2018 February	2018 March	2018 April	2018 May	2018 June	FY '18 Average
Allegany	71												71
Anne Arundel	536												536
Baltimore Co.	1,114												1,114
Calvert	92												92
Caroline	26												26
Carroll	93												93
Cecil	126												126
Charles	213												213
Dorchester	32												32
Frederick	173												173
Garrett	17												17
Harford	215												215
Howard	167												167
Kent	18												18
Montgomery	588												588
Prince George's	1,350												1,350
Queen Anne's	30												30
St. Mary's	103												103
Somerset	24												24
Talbot	21												21
Washington	215												215
Wicomico	157												157
Worcester	52												52
Baltimore City	1,551												1,551
State Totals	6,984												6,984

Food Supplement Program: Cases, Participants, & Issuances

FSP Cases	2017 July	2017 August	2017 September	2017 October	2017 November	2017 December	2018 January	2018 February	2018 March	2018 April	2018 May	2018 June	FY '18 Average
Allegany	7,646												7,646
Anne Arundel	18,866												18,866
Baltimore Co.	46,681												46,681
Calvert	3,267												3,267
Caroline	3,028												3,028
Carroll	5,402												5,402
Cecil	6,799												6,799
Charles	7,611												7,611
Dorchester	4,315												4,315
Frederick	8,474												8,474
Garrett	2,077												2,077
Harford	10,280												10,280
Howard	8,206												8,206
Kent	1,480												1,480
Montgomery	31,642												31,642
Prince George's	42,185												42,185
Queen Anne's	2,064												2,064
St. Mary's	6,141												6,141
Somerset	2,859												2,859
Talbot	2,196												2,196
Washington	11,372												11,372
Wicomico	9,319												9,319
Worcester	3,183												3,183
Baltimore City	105,316												105,316
State Totals	350,409												350,409

Food Supplement Program: Cases, Participants, & Issuances

FSP Participants	2017 July	2017 August	2017 September	2017 October	2017 November	2017 December	2018 January	2018 February	2018 March	2018 April	2018 May	2018 June	FY '18 Average
Allegany	14,154												14,154
Anne Arundel	36,875												36,875
Baltimore Co.	93,453												93,453
Calvert	6,148												6,148
Caroline	6,109												6,109
Carroll	10,524												10,524
Cecil	13,540												13,540
Charles	15,384												15,384
Dorchester	8,049												8,049
Frederick	17,495												17,495
Garrett	4,034												4,034
Harford	20,077												20,077
Howard	17,184												17,184
Kent	2,703												2,703
Montgomery	62,549												62,549
Prince George's	85,423												85,423
Queen Anne's	3,896												3,896
St. Mary's	12,044												12,044
Somerset	5,600												5,600
Talbot	3,881												3,881
Washington	22,990												22,990
Wicomico	18,607												18,607
Worcester	5,925												5,925
Baltimore City	179,707												179,707
State Totals	666,351												666,351

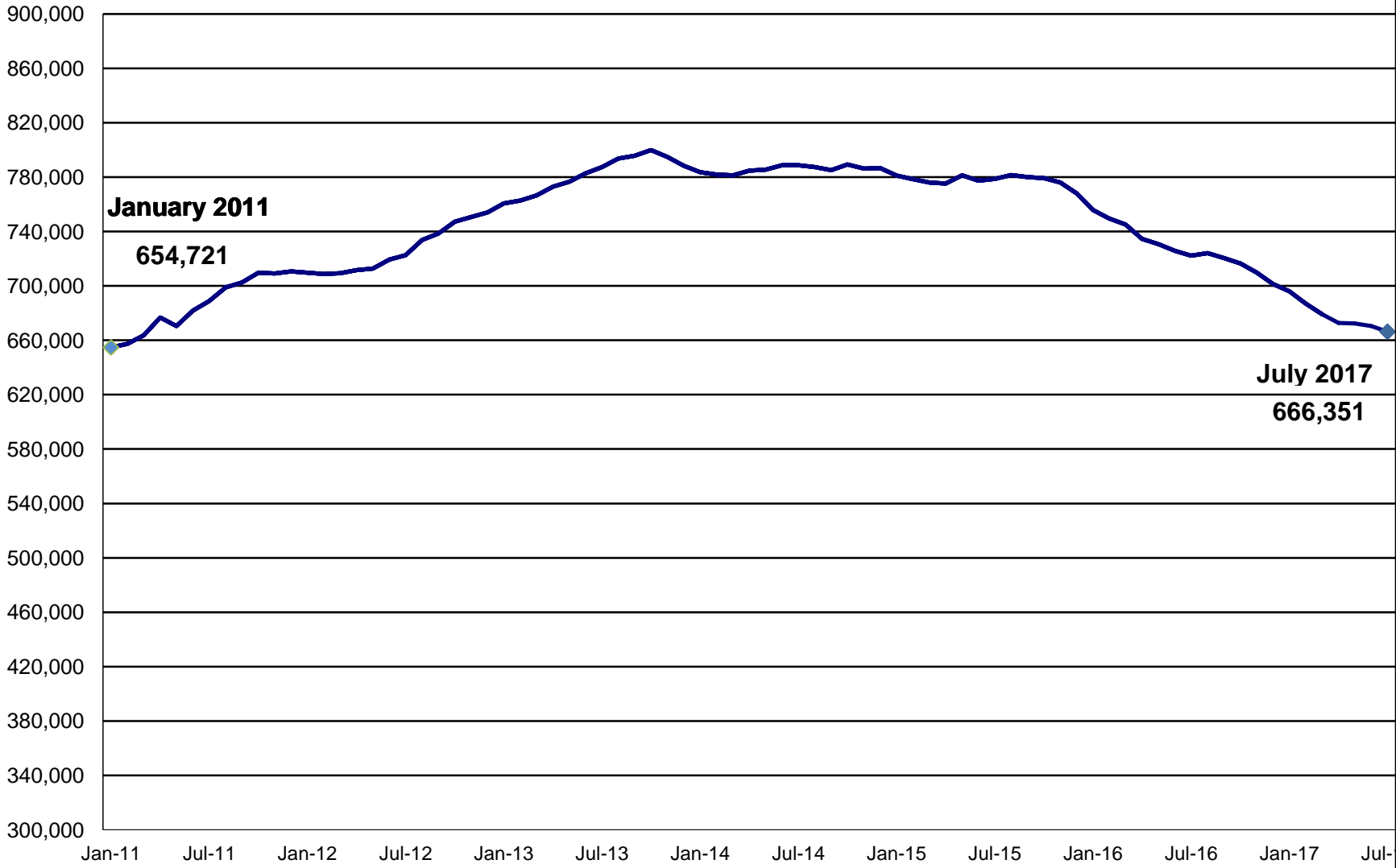
Food Supplement Program: Cases, Participants, & Issuances

Net Expenditures	2017 July	2017 August	2017 September	2017 October	2017 November	2017 December	2018 January	2018 February	2018 March	2018 April	2018 May	2018 June	FY '18 Average
Allegany	\$1,519.04												\$1,519.04
Anne Arundel	\$4,307.64												\$4,307.64
Baltimore Co.	\$11,114.74												\$11,114.74
Calvert	\$687.65												\$687.65
Caroline	\$696.61												\$696.61
Carroll	\$1,219.26												\$1,219.26
Cecil	\$1,593.98												\$1,593.98
Charles	\$817.05												\$817.05
Dorchester	\$921.94												\$921.94
Frederick	\$2,022.10												\$2,022.10
Garrett	\$383.26												\$383.26
Harford	\$2,315.18												\$2,315.18
Howard	\$2,083.11												\$2,083.11
Kent	\$300.50												\$300.50
Montgomery	\$6,905.82												\$6,905.82
Prince George's	\$10,639.89												\$10,639.89
Queen Anne's	\$459.18												\$459.18
St. Mary's	\$1,360.46												\$1,360.46
Somerset	\$644.27												\$644.27
Talbot	\$438.90												\$438.90
Washington	\$2,655.33												\$2,655.33
Wicomico	\$2,105.35												\$2,105.35
Worcester	\$631.39												\$631.39
Baltimore City	\$23,158.74												\$23,158.74
State Totals*	\$78,981.38												\$78,981.38

*DHS reports local statistics based on preliminary data. State totals for FSP expenditures are later revised in bold when final data are available.

[DATA: x \$1,000]

TOTAL FSP PARTICIPANTS



Temporary Disability Assistance Program: Applications Received, Applications Approved, & Cases Closed

Applications Received	2017 July	2017 August	2017 September	2017 October	2017 November	2017 December	2018 January	2018 February	2018 March	2018 April	2018 May	2018 June	FY '18 Average
Allegany	47												47
Anne Arundel	216												216
Baltimore Co.	343												343
Calvert	31												31
Caroline	11												11
Carroll	55												55
Cecil	65												65
Charles	52												52
Dorchester	25												25
Frederick	69												69
Garrett	6												6
Harford	88												88
Howard	76												76
Kent	8												8
Montgomery	229												229
Prince George's	273												273
Queen Anne's	10												10
St. Mary's	59												59
Somerset	8												8
Talbot	15												15
Washington	133												133
Wicomico	49												49
Worcester	20												20
Baltimore City	1,225												1,225
State Totals	3,113												3,113

Temporary Disability Assistance Program: Applications Received, Applications Approved, & Cases Closed

Applications	2017	2017	2017	2017	2017	2017	2018	2018	2018	2018	2018	2018	FY '18
Approved	July	August	September	October	November	December	January	February	March	April	May	June	Average
Allegany	28												28
Anne Arundel	57												57
Baltimore Co.	88												88
Calvert	5												5
Caroline	2												2
Carroll	30												30
Cecil	13												13
Charles	16												16
Dorchester	9												9
Frederick	20												20
Garrett	7												7
Harford	21												21
Howard	17												17
Kent	4												4
Montgomery	42												42
Prince George's	55												55
Queen Anne's	4												4
St. Mary's	18												18
Somerset	6												6
Talbot	9												9
Washington	34												34
Wicomico	21												21
Worcester	12												12
Baltimore City	493												493
State Totals	1,011												1,011

Temporary Disability Assistance Program: Applications Received, Applications Approved, & Cases Closed

Applications Not Approved	2017	2017	2017	2017	2017	2017	2018	2018	2018	2018	2018	2018	FY '18
	July	August	September	October	November	December	January	February	March	April	May	June	Average
Allegany	31												31
Anne Arundel	171												171
Baltimore Co.	287												287
Calvert	18												18
Caroline	8												8
Carroll	44												44
Cecil	53												53
Charles	38												38
Dorchester	14												14
Frederick	72												72
Garrett	8												8
Harford	75												75
Howard	55												55
Kent	10												10
Montgomery	180												180
Prince George's	203												203
Queen Anne's	10												10
St. Mary's	39												39
Somerset	12												12
Talbot	7												7
Washington	109												109
Wicomico	49												49
Worcester	18												18
Baltimore City	890												890
State Totals	2,401												2,401

Temporary Disability Assistance Program: Applications Received, Applications Approved, & Cases Closed

Closed Cases	2017 July	2017 August	2017 September	2017 October	2017 November	2017 December	2018 January	2018 February	2018 March	2018 April	2018 May	2018 June	FY '18 Average
Allegany	35												35
Anne Arundel	53												53
Baltimore Co.	140												140
Calvert	11												11
Caroline	10												10
Carroll	13												13
Cecil	26												26
Charles	18												18
Dorchester	17												17
Frederick	39												39
Garrett	7												7
Harford	23												23
Howard	25												25
Kent	0												0
Montgomery	50												50
Prince George's	41												41
Queen Anne's	5												5
St. Mary's	28												28
Somerset	9												9
Talbot	3												3
Washington	54												54
Wicomico	31												31
Worcester	10												10
Baltimore City	789												789
State Totals	1,437												1,437

Temporary Disability Assistance Program: Recipients and Net Expenditures

Total Recipients	2017 July	2017 August	2017 September	2017 October	2017 November	2017 December	2018 January	2018 February	2018 March	2018 April	2018 May	2018 June	FY '18 Average
Allegany	423												423
Anne Arundel	538												538
Baltimore Co.	1,450												1,450
Calvert	89												89
Caroline	84												84
Carroll	232												232
Cecil	241												241
Charles	166												166
Dorchester	120												120
Frederick	274												274
Garrett	80												80
Harford	296												296
Howard	158												158
Kent	35												35
Montgomery	558												558
Prince George's	572												572
Queen Anne's	52												52
St. Mary's	266												266
Somerset	87												87
Talbot	65												65
Washington	438												438
Wicomico	262												262
Worcester	108												108
Baltimore City	8,591												8,591
State Totals*	15,185												15,185

*DHS reports local statistics based on preliminary data. State totals for recipients/expenditures are later revised **in bold** when final data are available.

Temporary Disability Assistance Program: Recipients and Net Expenditures

Short Term Recipients	2017 July	2017 August	2017 September	2017 October	2017 November	2017 December	2018 January	2018 February	2018 March	2018 April	2018 May	2018 June	FY '18 Average
Allegany	25												25
Anne Arundel	72												72
Baltimore Co.	198												198
Calvert	9												9
Caroline	12												12
Carroll	48												48
Cecil	29												29
Charles	16												16
Dorchester	17												17
Frederick	22												22
Garrett	8												8
Harford	34												34
Howard	16												16
Kent	7												7
Montgomery	90												90
Prince George's	126												126
Queen Anne's	5												5
St. Mary's	47												47
Somerset	7												7
Talbot	10												10
Washington	41												41
Wicomico	28												28
Worcester	9												9
Baltimore City	426												426
State Totals	1,302												1,302

Temporary Disability Assistance Program: Recipients and Net Expenditures

Long Term Recipients	2017 July	2017 August	2017 September	2017 October	2017 November	2017 December	2018 January	2018 February	2018 March	2018 April	2018 May	2018 June	FY '18 Average
Allegany	398												398
Anne Arundel	466												466
Baltimore Co.	1,252												1,252
Calvert	80												80
Caroline	72												72
Carroll	184												184
Cecil	212												212
Charles	150												150
Dorchester	103												103
Frederick	252												252
Garrett	72												72
Harford	262												262
Howard	142												142
Kent	28												28
Montgomery	468												468
Prince George's	446												446
Queen Anne's	47												47
St. Mary's	219												219
Somerset	80												80
Talbot	55												55
Washington	397												397
Wicomico	234												234
Worcester	99												99
Baltimore City	8,165												8,165
State Totals	13,883	0	0	0	0	0	0	0	0	0	0	0	1,157

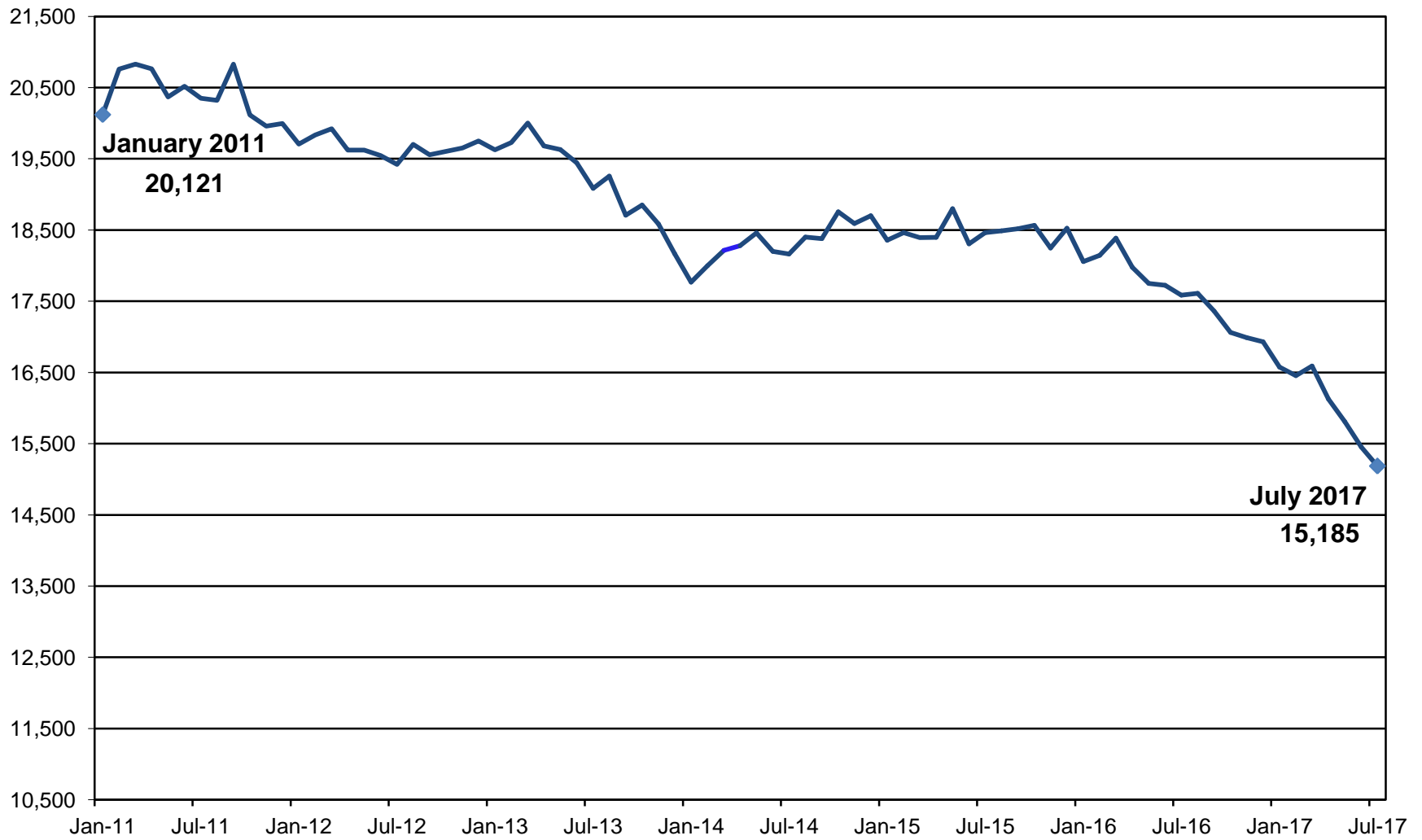
Temporary Disability Assistance Program: Recipients and Net Expenditures

Net Expenditures	2017 July	2017 August	2017 September	2017 October	2017 November	2017 December	2018 January	2018 February	2018 March	2018 April	2018 May	2018 June	FY '18 Average
Allegany	\$73.16												\$73.16
Anne Arundel	\$76.73												\$76.73
Baltimore Co.	\$241.48												\$241.48
Calvert	\$16.51												\$16.51
Caroline	\$15.28												\$15.28
Carroll	\$26.58												\$26.58
Cecil	\$21.00												\$21.00
Charles	\$28.59												\$28.59
Dorchester	\$22.18												\$22.18
Frederick	\$38.42												\$38.42
Garrett	\$14.47												\$14.47
Harford	\$52.65												\$52.65
Howard	\$25.25												\$25.25
Kent	\$6.44												\$6.44
Montgomery	\$77.99												\$77.99
Prince George's	\$87.02												\$87.02
Queen Anne's	\$8.12												\$8.12
St. Mary's	\$36.28												\$36.28
Somerset	\$16.07												\$16.07
Talbot	\$0.00												\$0.00
Washington	\$49.02												\$49.02
Wicomico	\$43.19												\$43.19
Worcester	\$13.52												\$13.52
Baltimore City	\$1,434.64												\$1,434.64
State Totals*	\$2,436.69												\$2,436.69

*DHS reports local statistics based on preliminary data. State totals for recipients/expenditures are later revised **in bold** when final data are available.

[DATA: x \$1,000]

TDAP CASELOAD: PAID CASES



Public Assistance to Adults: Paid Recipients and Net Expenditures

Net Expenditures	2017 July	2017 August	2017 September	2017 October	2017 November	2017 December	2018 January	2018 February	2018 March	2018 April	2018 May	2018 June	FY '18 Average
Allegany	7,497												\$7,497.00
Anne Arundel	25,366												\$25,365.75
Baltimore Co.	51,643												\$51,643.37
Calvert	3,083												\$3,083.27
Caroline	1,831												\$1,831.00
Carroll	5,236												\$5,235.98
Cecil	2,870												\$2,870.00
Charles	11,233												\$11,232.80
Dorchester	7,590												\$7,590.29
Frederick	25,515												\$25,515.26
Garrett	246												\$246.00
Harford	12,743												\$12,742.57
Howard	16,348												\$16,348.27
Kent	1,312												\$1,312.00
Montgomery	41,154												\$41,153.60
Prince George's	58,384												\$58,384.12
Queen Anne's	1,943												\$1,942.87
St. Mary's	8,149												\$8,148.67
Somerset	1,148												\$1,148.00
Talbot	980												\$980.00
Washington	30,871												\$30,871.00
Wicomico	18,944												\$18,944.46
Worcester	2,077												\$2,077.00
Baltimore City	387,950												\$387,949.66
State Totals	\$724,112.94												\$724,112.94

Emergency Assistance to Families with Children: Grants Approved and Net Expenditures

Net Expenditures	2017 July	2017 August	2017 September	2017 October	2017 November	2017 December	2018 January	2018 February	2018 March	2018 April	2018 May	2018 June	FY '18 Average
Allegany	\$5,893.00												\$5,893.00
Anne Arundel	\$9,675.61												\$9,675.61
Baltimore Co.	\$89,744.05												\$89,744.05
Calvert	\$4,161.83												\$4,161.83
Caroline	\$65.84												\$65.84
Carroll	\$250.00												\$250.00
Cecil	\$0.00												\$0.00
Charles	\$0.00												\$0.00
Dorchester	\$1,770.84												\$1,770.84
Frederick	\$0.00												\$0.00
Garrett	\$4,799.67												\$4,799.67
Harford	\$7,109.93												\$7,109.93
Howard	\$679.00												\$679.00
Kent	\$500.00												\$500.00
Montgomery	\$36,892.85												\$36,892.85
Prince George's	\$9,577.64												\$9,577.64
Queen Anne's	\$0.00												\$0.00
St. Mary's	\$47,318.41												\$47,318.41
Somerset	\$481.23												\$481.23
Talbot	\$1,397.94												\$1,397.94
Washington	\$2,694.78												\$2,694.78
Wicomico	\$2,000.00												\$2,000.00
Worcester	\$500.00												\$500.00
Baltimore City	\$254,733.33												\$254,733.33
State Totals	\$480,245.95												\$480,245.95

Burial Assistance: Grants Approved and Net Expenditures

Net Expenditures	2017 July	2017 August	2017 September	2017 October	2017 November	2017 December	2018 January	2018 February	2018 March	2018 April	2018 May	2018 June	FY '18 Average
Allegany	\$650.00												\$650.00
Anne Arundel	\$0.00												\$0.00
Baltimore Co.	\$0.00												\$0.00
Calvert	\$0.00												\$0.00
Caroline	\$0.00												\$0.00
Carroll	\$650.00												\$650.00
Cecil	\$0.00												\$0.00
Charles	\$0.00												\$0.00
Dorchester	\$0.00												\$0.00
Frederick	\$650.00												\$650.00
Garrett	\$0.00												\$0.00
Harford	\$0.00												\$0.00
Howard	\$0.00												\$0.00
Kent	\$0.00												\$0.00
Montgomery	\$0.00												\$0.00
Prince George's	\$1,299.99												\$1,299.99
Queen Anne's	\$0.00												\$0.00
St. Mary's	\$1,300.00												\$1,300.00
Somerset	\$0.00												\$0.00
Talbot	\$650.00												\$650.00
Washington	\$650.00												\$650.00
Wicomico	\$650.00												\$650.00
Worcester	\$0.00												\$0.00
Baltimore City	\$16,250.00												\$16,250.00
State Totals	\$22,749.99												\$22,749.99

Medical Assistance: Applications Received and Applications Approved

MA- Community Care

Applications Received	2017 July	2017 August	2017 September	2017 October	2017 November	2017 December	2018 January	2018 February	2018 March	2018 April	2018 May	2018 June	FY '18 Average
Allegany	78												78
Anne Arundel	324												324
Baltimore Co.	694												694
Calvert	61												61
Caroline	50												50
Carroll	87												87
Cecil	91												91
Charles	87												87
Dorchester	73												73
Frederick	168												168
Garrett	11												11
Harford	130												130
Howard	134												134
Kent	15												15
Montgomery	899												899
Prince George's	863												863
Queen Anne's	21												21
St. Mary's	50												50
Somerset	18												18
Talbot	22												22
Washington	124												124
Wicomico	94												94
Worcester	45												45
Baltimore City	1,239												1,239
State Totals	5,378												5,378

Medical Assistance: Applications Received and Applications Approved

MA- Community Care

Applications Approved	2017 July	2017 August	2017 September	2017 October	2017 November	2017 December	2018 January	2018 February	2018 March	2018 April	2018 May	2018 June	FY '18 Average
Allegany	61												61
Anne Arundel	372												372
Baltimore Co.	677												677
Calvert	59												59
Caroline	35												35
Carroll	80												80
Cecil	83												83
Charles	115												115
Dorchester	57												57
Frederick	117												117
Garrett	8												8
Harford	150												150
Howard	146												146
Kent	14												14
Montgomery	835												835
Prince George's	666												666
Queen Anne's	9												9
St. Mary's	49												49
Somerset	14												14
Talbot	19												19
Washington	87												87
Wicomico	68												68
Worcester	40												40
Baltimore City	1,369												1,369
State Totals	5,130												5,130

Medical Assistance: Applications Received and Applications Approved

MA- Long Term Care

Applications Received	2017 July	2017 August	2017 September	2017 October	2017 November	2017 December	2018 January	2018 February	2018 March	2018 April	2018 May	2018 June	FY '18 Average
Regional Office	323												323
Allegany	23												23
Anne Arundel	2												2
Baltimore Co.	4												4
Calvert	6												6
Caroline	3												3
Carroll	20												20
Cecil	20												20
Charles	17												17
Dorchester	8												8
Frederick	9												9
Garrett	4												4
Harford	30												30
Howard	16												16
Kent	5												5
Montgomery	86												86
Prince George's	4												4
Queen Anne's	7												7
St. Mary's	13												13
Somerset	8												8
Talbot	3												3
Washington	35												35
Wicomico	21												21
Worcester	6												6
Baltimore City	9												9
State Totals	682												682

Note: MA-LTC processing was regionalized for Baltimore City and Anne Arundel, Baltimore and Prince George's counties beginning in October 2009.

Medical Assistance: Applications Received and Applications Approved

MA- Long Term Care

Applications Approved	2017 July	2017 August	2017 September	2017 October	2017 November	2017 December	2018 January	2018 February	2018 March	2018 April	2018 May	2018 June	FY '18 Average
Regional Office	393												393
Allegany	28												28
Anne Arundel	1												1
Baltimore Co.	7												7
Calvert	5												5
Caroline	8												8
Carroll	22												22
Cecil	19												19
Charles	23												23
Dorchester	6												6
Frederick	22												22
Garrett	5												5
Harford	24												24
Howard	19												19
Kent	7												7
Montgomery	70												70
Prince George's	5												5
Queen Anne's	4												4
St. Mary's	7												7
Somerset	8												8
Talbot	5												5
Washington	37												37
Wicomico	27												27
Worcester	7												7
Baltimore City	0												0
State Totals	759												759

Note: MA-LTC processing was regionalized for Baltimore City and Anne Arundel, Baltimore and Prince George's counties beginning in October 2009.

Medical Assistance: Applications Received and Applications Approved

MA- SSI

Applications Received	2017 July	2017 August	2017 September	2017 October	2017 November	2017 December	2018 January	2018 February	2018 March	2018 April	2018 May	2018 June	FY '18 Average
Allegany	22												22
Anne Arundel	12												12
Baltimore Co.	81												81
Calvert	5												5
Caroline	4												4
Carroll	6												6
Cecil	6												6
Charles	19												19
Dorchester	2												2
Frederick	12												12
Garrett	1												1
Harford	14												14
Howard	15												15
Kent	1												1
Montgomery	80												80
Prince George's	37												37
Queen Anne's	4												4
St. Mary's	23												23
Somerset	5												5
Talbot	4												4
Washington	18												18
Wicomico	7												7
Worcester	8												8
Baltimore City	109												109
State Totals	495												495

Medical Assistance: Applications Received and Applications Approved

MA- SSI

Applications Approved	2017 July	2017 August	2017 September	2017 October	2017 November	2017 December	2018 January	2018 February	2018 March	2018 April	2018 May	2018 June	FY '18 Average
Allegany	30												30
Anne Arundel	135												135
Baltimore Co.	242												242
Calvert	31												31
Caroline	11												11
Carroll	19												19
Cecil	27												27
Charles	59												59
Dorchester	20												20
Frederick	29												29
Garrett	1												1
Harford	60												60
Howard	76												76
Kent	2												2
Montgomery	176												176
Prince George's	167												167
Queen Anne's	0												0
St. Mary's	25												25
Somerset	11												11
Talbot	3												3
Washington	42												42
Wicomico	30												30
Worcester	12												12
Baltimore City	388												388
State Totals	1,596												1,596

Medical Assistance: Cases Under Care

MA- Community Care

MA-CC Cases	2017 July	2017 August	2017 September	2017 October	2017 November	2017 December	2018 January	2018 February	2018 March	2018 April	2018 May	2018 June	FY '18 Average
Allegany	1,106												1,106
Anne Arundel	3,229												3,229
Baltimore Co.	6,900												6,900
Calvert	592												592
Caroline	477												477
Carroll	879												879
Cecil	1,022												1,022
Charles	1,148												1,148
Dorchester	578												578
Frederick	1,648												1,648
Garrett	457												457
Harford	1,838												1,838
Howard	1,767												1,767
Kent	218												218
Montgomery	9,046												9,046
Prince George's	9,014												9,014
Queen Anne's	333												333
St. Mary's	867												867
Somerset	419												419
Talbot	385												385
Washington	1,820												1,820
Wicomico	1,149												1,149
Worcester	616												616
Baltimore City	15,491												15,491
State Totals	60,999												60,999

Medical Assistance: Cases Under Care

MA- Long Term Care

MA-LTC Cases	2017 July	2017 August	2017 September	2017 October	2017 November	2017 December	2018 January	2018 February	2018 March	2018 April	2018 May	2018 June	FY '18 Average
Regional Office	8,268												8,268
Allegany	628												628
Anne Arundel	12												12
Baltimore Co.	110												110
Calvert	181												181
Caroline	104												104
Carroll	394												394
Cecil	239												239
Charles	348												348
Dorchester	169												169
Frederick	484												484
Garrett	242												242
Harford	502												502
Howard	331												331
Kent	96												96
Montgomery	1,912												1,912
Prince George's	44												44
Queen Anne's	95												95
St. Mary's	287												287
Somerset	132												132
Talbot	133												133
Washington	640												640
Wicomico	430												430
Worcester	197												197
Baltimore City	38												38
State Totals	16,016												16,016

Note: MA-LTC processing was regionalized for Baltimore City and Anne Arundel, Baltimore and Prince George's counties beginning in October 2009.

Medical Assistance: Cases Under Care

MA- SSI

MA-SSI Cases	2017 July	2017 August	2017 September	2017 October	2017 November	2017 December	2018 January	2018 February	2018 March	2018 April	2018 May	2018 June	FY '18 Average
Allegany	2,494												2,494
Anne Arundel	6,249												6,249
Baltimore Co.	15,234												15,234
Calvert	975												975
Caroline	825												825
Carroll	1,435												1,435
Cecil	1,966												1,966
Charles	2,358												2,358
Dorchester	1,319												1,319
Frederick	2,376												2,376
Garrett	660												660
Harford	3,275												3,275
Howard	3,221												3,221
Kent	337												337
Montgomery	14,014												14,014
Prince George's	13,445												13,445
Queen Anne's	426												426
St. Mary's	1,704												1,704
Somerset	875												875
Talbot	572												572
Washington	3,812												3,812
Wicomico	2,848												2,848
Worcester	808												808
Baltimore City	44,524												44,524
State Totals	125,752												125,752